

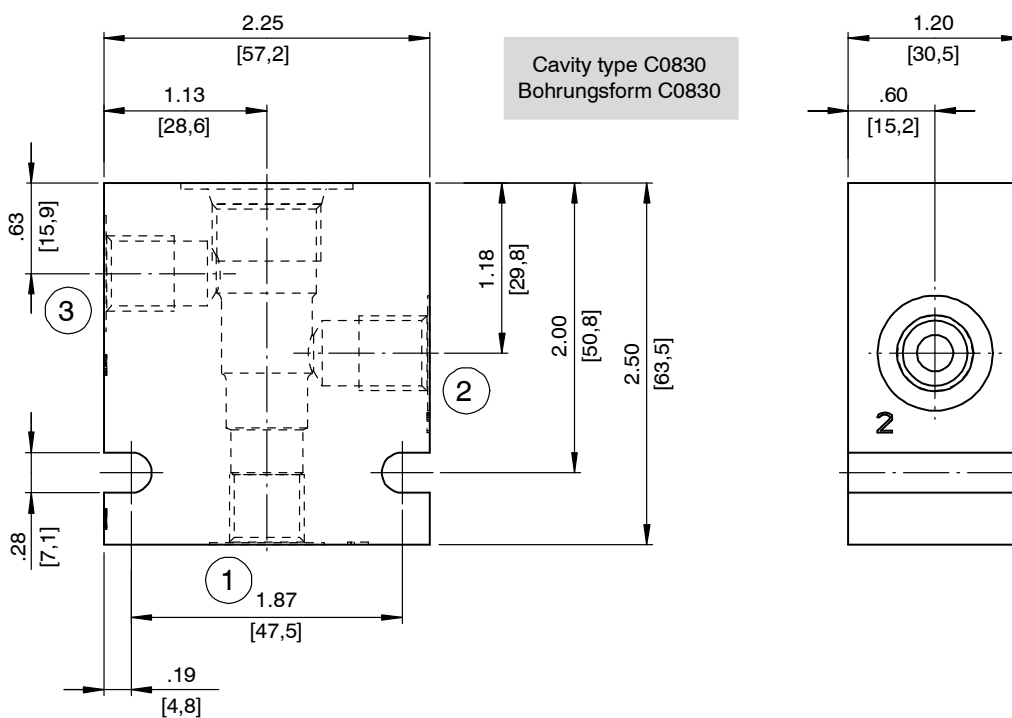
Line-Mounting Body, Size SAE 08 / NG 5

Type: 8 Series - 3-Way

1 Technical data

Ordering code	Description	Material	Maximum operating pressure	Weight	Port 1	Port 2	Port 3
06TA	30408	Aluminium	3000 psi [210 bar]	.529 lbs [0.25 kg]	SAE-6	SAE-6	SAE-6
06TS	30420	Steel	5000 psi [350 bar]	1.542 lbs [0.70 kg]	SAE-6	SAE-6	SAE-6
<i>Available on request for quantities > 100 pieces/year.</i>							
02BA	30407	Aluminium	3000 psi [210 bar]	.541 lbs [0.25 kg]	G 1/4" -19 BSPP	G 1/4" -19 BSPP	G 1/4" -19 BSPP
02BS	30419	Steel	5000 psi [350 bar]	1.577 lbs [0.70 kg]	G 1/4" -19 BSPP	G 1/4" -19 BSPP	G 1/4" -19 BSPP

2 Dimensions & sectional view



3 Related data sheets

Reference	(Old no.)	Description
520-P-000310	(0-031.0)	Cavity type C0830

info.el@bucherhydraulics.com

www.bucherhydraulics.com/commoncavity

© 2018 by Bucher Hydraulics, Inc., 2545 Northwest Parkway, Elgin, Illinois 60124, USA

All rights reserved.

Data is provided for the purpose of product description only, and must not be construed as warranted characteristics in the legal sense. The information does not relieve users from the duty of conducting their own evaluations and tests. Because the products are subject to continual improvement, we reserve the right to amend the product specifications contained in this catalogue.

Classification: 430.395.-.-.-.