

Line-Mounting Body, Size SAE 12 / NG 10

Type: 12 Series - 3-Way

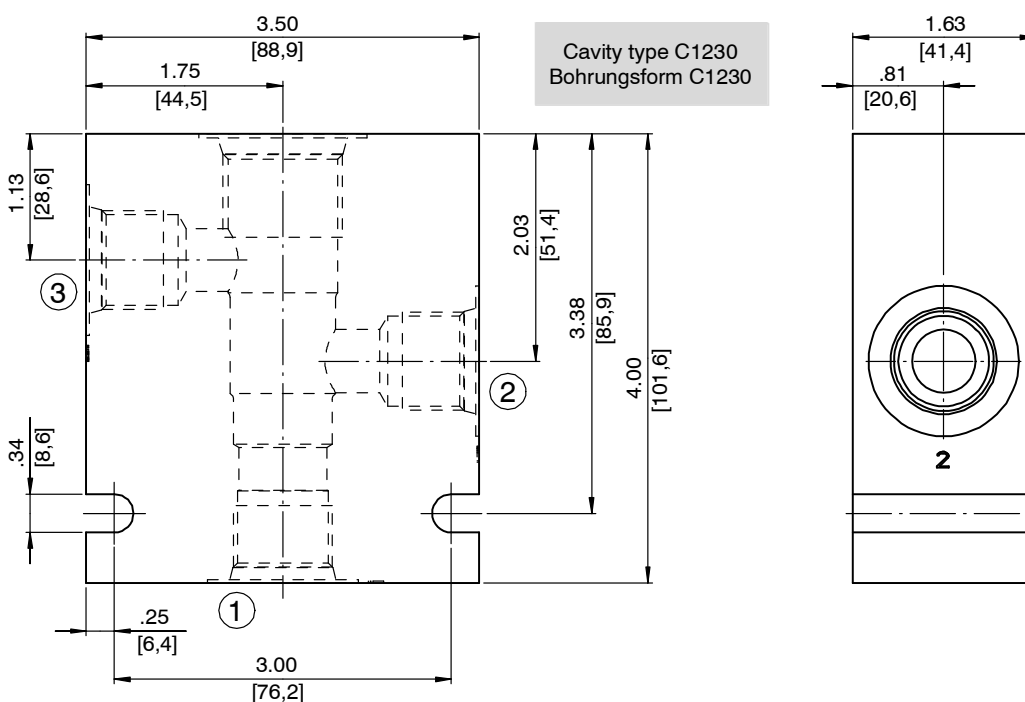
1 Technical data

Ordering code	Description	Material	Maximum operating pressure	Weight	Port 1	Port 2	Port 3
10TA	30160	Aluminum	3000 psi [210 bar]	1.806 lbs [0.82 kg]	SAE-10	SAE-10	SAE-10
10TS	30166	Steel	5000 psi [350 bar]	5.261 lbs [2.39 kg]	SAE-10	SAE-10	SAE-10
12TA	30161	Aluminum	3000 psi [210 bar]	1.719 lbs [0.78 kg]	SAE-12	SAE-12	SAE-12
12TS	30167	Steel	5000 psi [350 bar]	5.008 lbs [2.27 kg]	SAE-12	SAE-12	SAE-12

Available on request for quantities > 100 pieces/year.

04BA	30158	Aluminum	3000 psi [210 bar]	1.838 lbs [0.83 kg]	G 1/2" -14 BSPP	G 1/2" -14 BSPP	G 1/2" -14 BSPP
04BS	30164	Steel	5000 psi [350 bar]	5.353 lbs [2.43 kg]	G 1/2" -14 BSPP	G 1/2" -14 BSPP	G 1/2" -14 BSPP
06BA	30159	Aluminum	3000 psi [210 bar]	1.746 lbs [0.79 kg]	G 3/4" -14 BSPP	G 3/4" -14 BSPP	G 3/4" -14 BSPP
06BS	30165	Steel	5000 psi [350 bar]	5.087 lbs [2.31 kg]	G 3/4" -14 BSPP	G 3/4" -14 BSPP	G 3/4" -14 BSPP

2 Dimensions & sectional view



3 Related data sheets

Reference	(Old no.)	Description
520-P-000330	(0-033.0)	Cavity type C1230

info.el@bucherhydraulics.com

www.bucherhydraulics.com/commoncavity

© 2018 by Bucher Hydraulics, Inc., 2545 Northwest Parkway, Elgin, Illinois 60124, USA

All rights reserved.

Data is provided for the purpose of product description only, and must not be construed as warranted characteristics in the legal sense. The information does not relieve users from the duty of conducting their own evaluations and tests. Because the products are subject to continual improvement, we reserve the right to amend the product specifications contained in this catalogue.

Classification: 430.395.-.-.-.