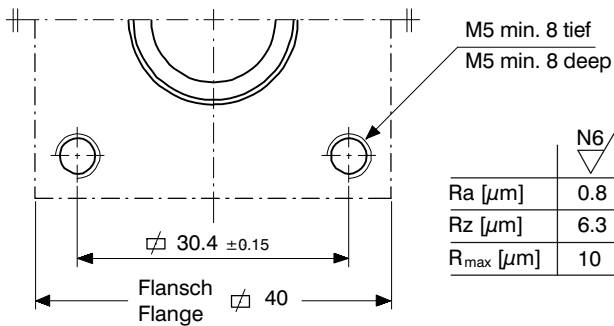
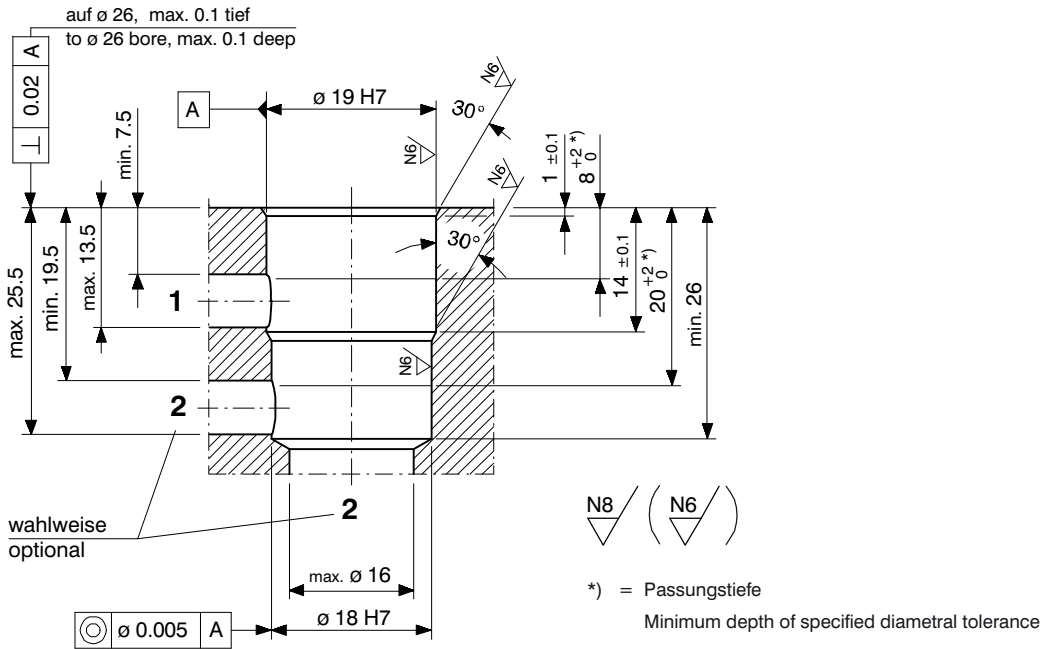
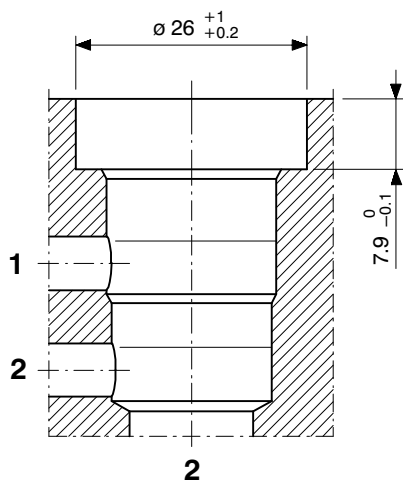


Cavity Types AA and AB

1 Cavity type AA SHALLOW INSERTION



2 Cavity type AB DEEP INSERTION



IMPORTANT!

For other dimensions and details, see cavity type AA.

3 Machining notes



ATTENTION!

You must maintain the specified positional and diametral tolerances. To ensure trouble-free operation of the screw-in cartridges, we strongly recommend that pilot drilling, boring, reaming and cavity thread-cutting are always performed in one setup.



IMPORTANT!

We offer form tool sets for sale or hire. For further information, see data sheet 400-P-040011-EN.

4 Cartridge valves

4.1 Cavity type AA

2/2 cartridge seat valves (solenoid operated)



W1CB...
W1CG...

W1CD...
W1CI...

4.2 Cavity type AB

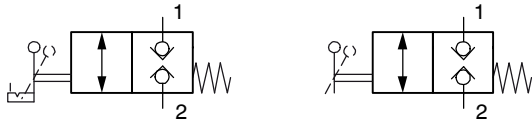
2/2 cartridge seat valves (solenoid operated)



W1CC...
W1CH...

W1CE...
W1CK...

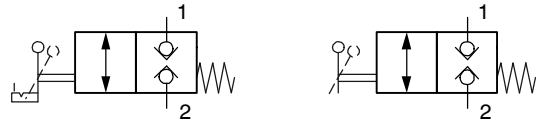
2/2 cartridge seat valves (manually operated)



W1TQ...
W1TS...

W1WQ...
W1WS...

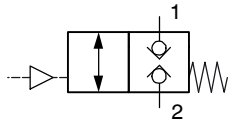
2/2 cartridge seat valves (manually operated)



W1TR...
W1TT...

W1WR...
W1WT...

2/2 cartridge seat valves (pneumatically operated)



W1QQ...
W1QS...