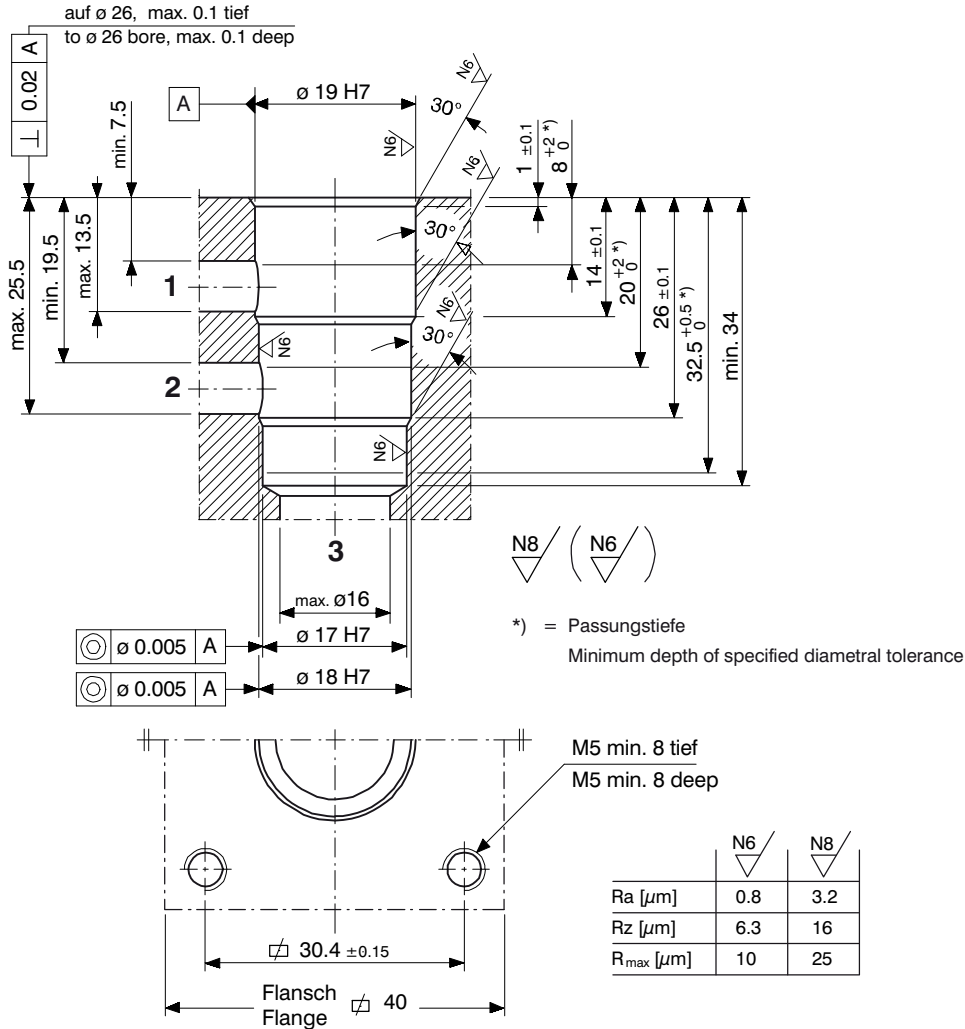
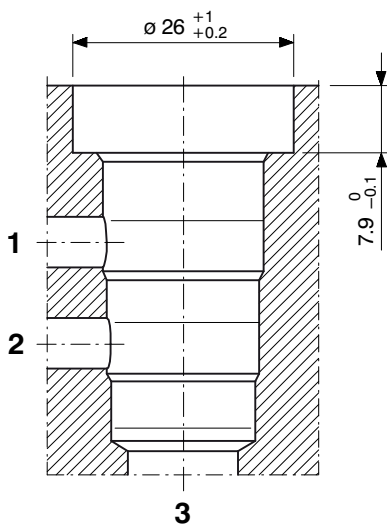


Cavity Types AC and AD

1 Cavity type AC SHALLOW INSERTION



2 Cavity type AD DEEP INSERTION



IMPORTANT!

For other dimensions and details,
see cavity type AC.

3 Machining notes



ATTENTION!

You must maintain the specified positional and diametral tolerances. To ensure trouble-free operation of the screw-in cartridges, we strongly recommend that pilot drilling, boring, reaming and cavity thread-cutting are always performed in one setup.



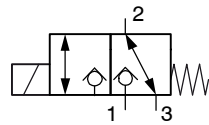
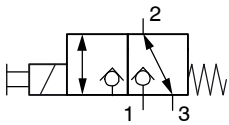
IMPORTANT!

We offer form tool sets for sale or hire. For further information, see data sheet 400-P-040011-EN.

4 Cartridge valves

4.1 Cavity type AC

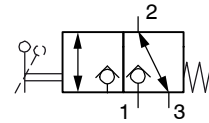
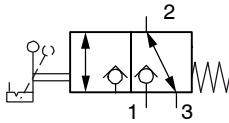
3/2 cartridge seat valves (solenoid operated)



W1DB... / W1FB...
W1DG... / W1FG...

W1DD... / W1FD...
W1DI... / W1FI...

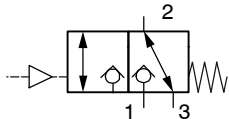
3/2 cartridge seat valves (manually operated)



W1UQ... / W1VQ...
W1US... / W1VS...

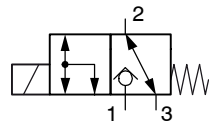
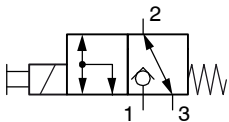
W1XQ... / W1YQ...
W1XS... / W1YS...

3/2 cartridge seat valves (pneumatically operated)



W1RQ... / W1SQ...
W1RS... / W1SS...

2/2 cartridge seat valves (solenoid operated)



W1CB...
W1CG...

W1CD...
W1CI...

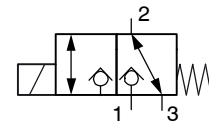
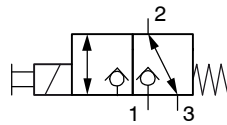


IMPORTANT!

2/2 cartridge seat valves for the AA cavity can also be fitted in the AC cavity, and in such cases ports 2 and 3 are directly and permanently connected to one another.

4.2 Cavity type AD

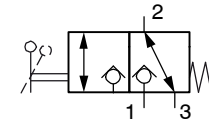
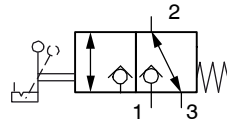
3/2 cartridge seat valves (solenoid operated)



W1DC... / W1FC...
W1DH... / W1FH...

W1DE... / W1FE...
W1DK... / W1FK...

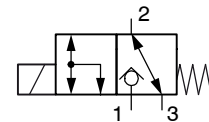
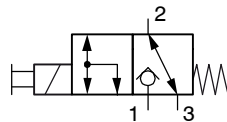
3/2 cartridge seat valves (manually operated)



W1UR... / W1VR...
W1UT... / W1VT...

W1XR... / W1YR...
W1XT... / W1YT...

2/2 cartridge seat valves (solenoid operated)



W1CC...
W1CH...

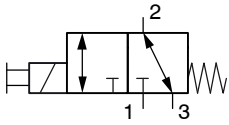
W1CE...
W1CK...



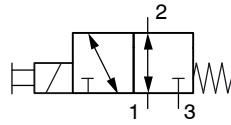
IMPORTANT!

2/2 cartridge seat valves for the AB cavity can also be fitted in the AD cavity, and in such cases ports 2 and 3 are directly and permanently connected to one another.

3/2 cartridge spool valves (solenoid operated)

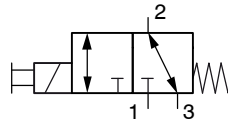


WKGECA...

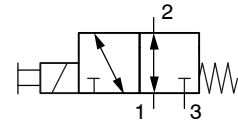


WKOECA...

3/2 cartridge spool valves (solenoid operated)

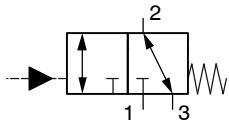


WKGEDA...

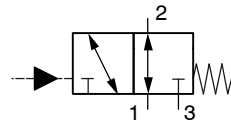


WKOEDA...

3/2 cartridge spool valves (hydraulically operated)

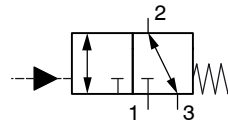


WKGHCA...

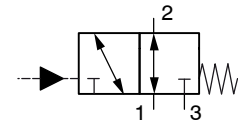


WKOHCA...

3/2 cartridge spool valves (hydraulically operated)



WKGHDA...



WKOHDA...

info.ch@bucherhydraulics.com

www.bucherhydraulics.com

© 2015 by Bucher Hydraulics AG Frutigen, CH-3714 Frutigen

All rights reserved.

Data is provided for the purpose of product description only, and must not be construed as warranted characteristics in the legal sense. The information does not relieve users from the duty of conducting their own evaluations and tests. Because the products are subject to continual improvement, we reserve the right to amend the product specifications contained in this catalogue.

Classification: 430.Info. ... (i-33.2)