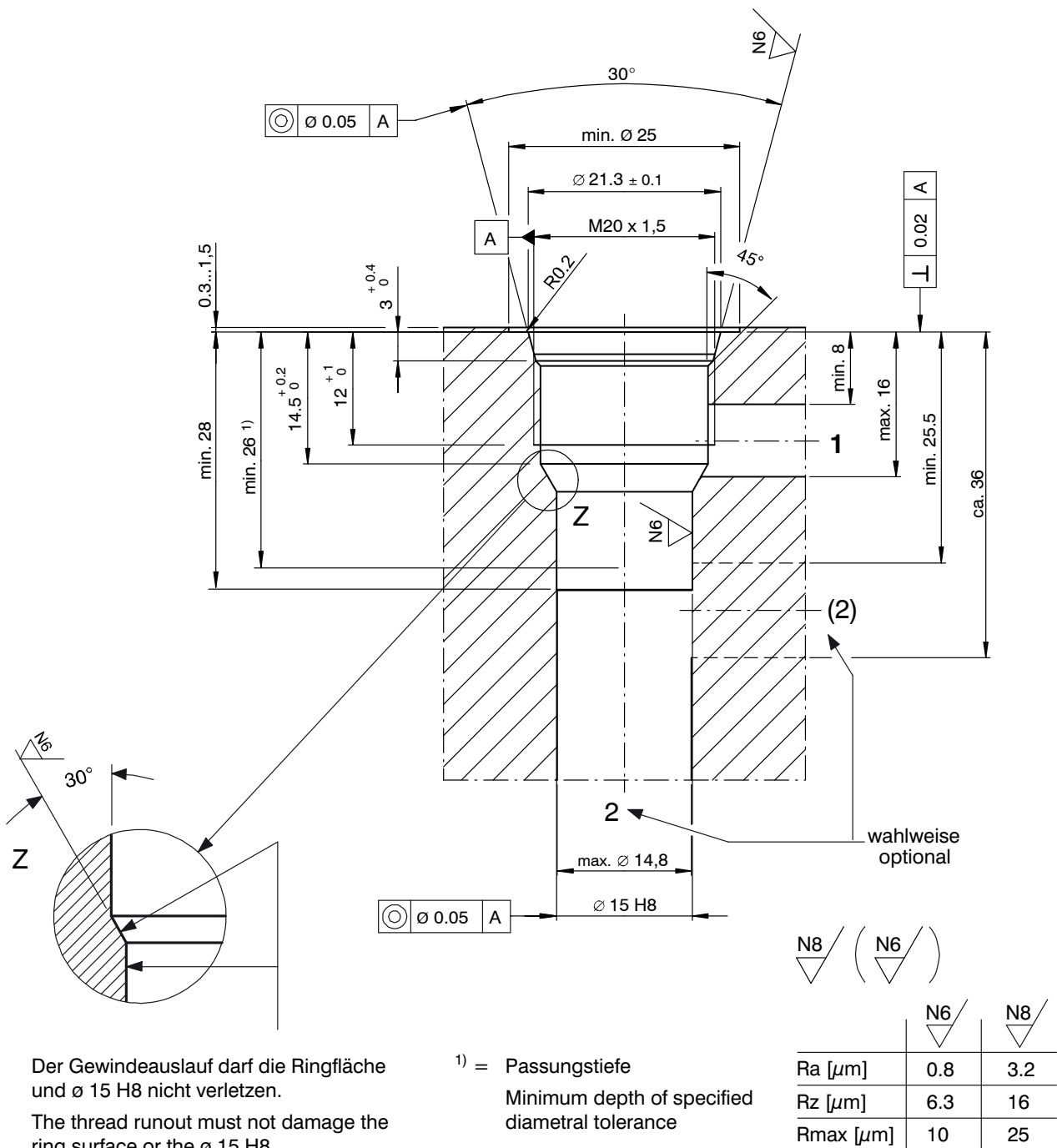


# Cavity Type ALM



## 1 Machining notes



### ATTENTION!

You must maintain the specified positional and diametral tolerances. To ensure trouble-free operation of the screw-in cartridges, we strongly recommend that pilot drilling, boring, reaming and cavity thread-cutting are always performed in one setup.

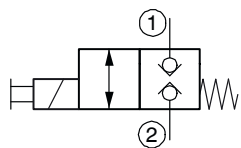


### IMPORTANT!

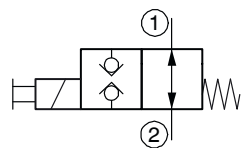
We offer form tool sets for sale or hire. For further information, see data sheet 400-P-040011-EN.

## 2 Cartridge valves

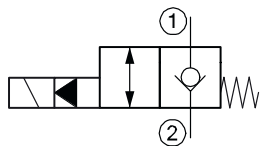
Directional cartridge valves (solenoid operated)



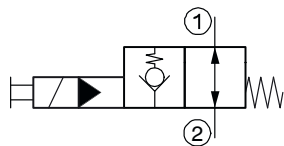
WS22GNA5...



WS22ONA5...



WR22G...



WR22O...