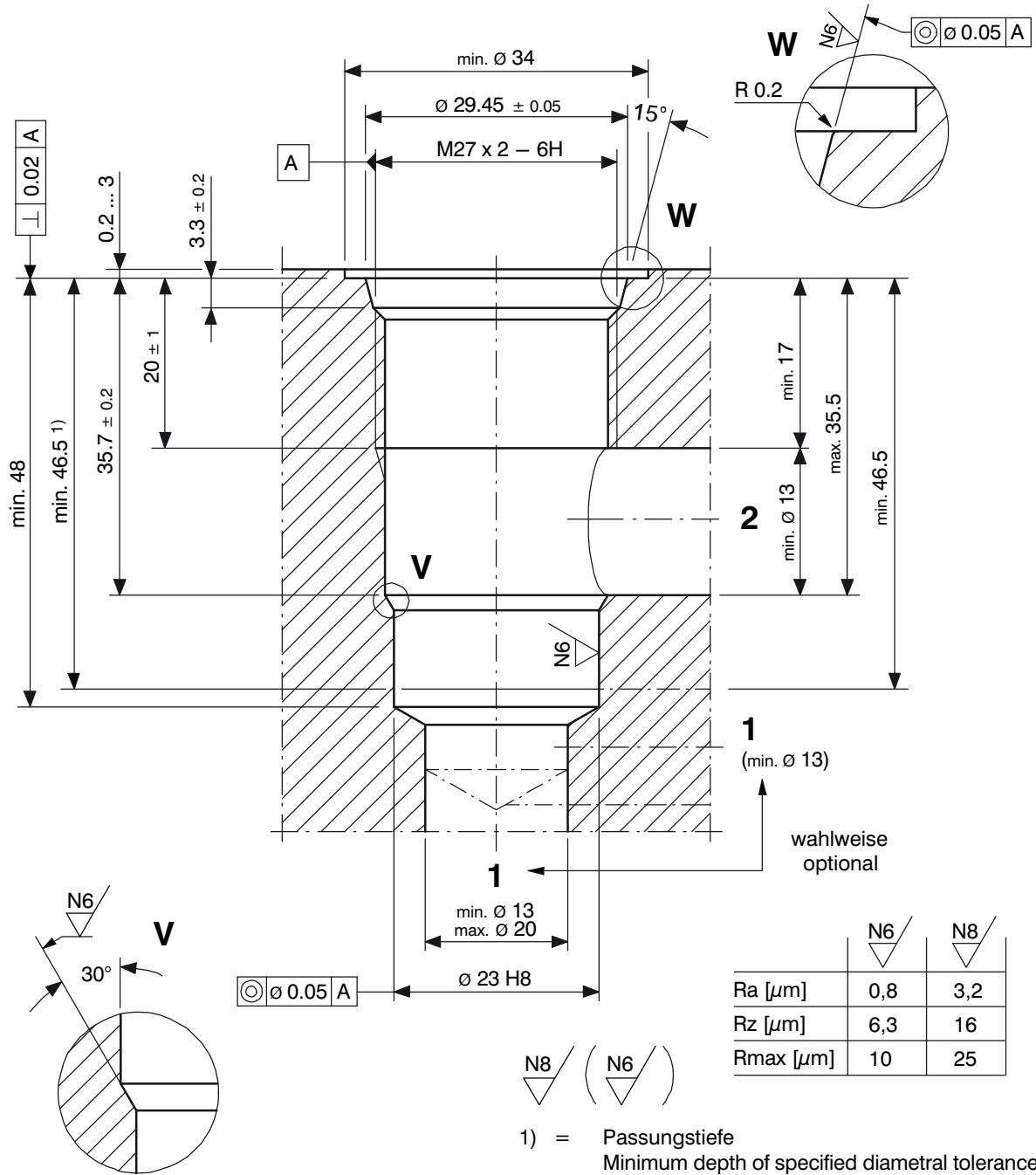


Cavity Type DH
to ISO 7789-27-01-0-07



1 Machining notes



ATTENTION!

You must maintain the specified positional and diametral tolerances. To ensure trouble-free operation of the screw-in cartridges, we strongly recommend that pilot drilling, boring, reaming and cavity thread-cutting are always performed in one setup.

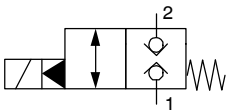


IMPORTANT!

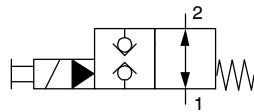
We offer form tool sets for sale or hire. For further information, see data sheet 400-P-040011-EN.

2 Cartridge valves

2/2 directional cartridges (solenoid operated)



WS22GNH...-10...



WS22ONH...-10...

Proportional-throttle cartridge