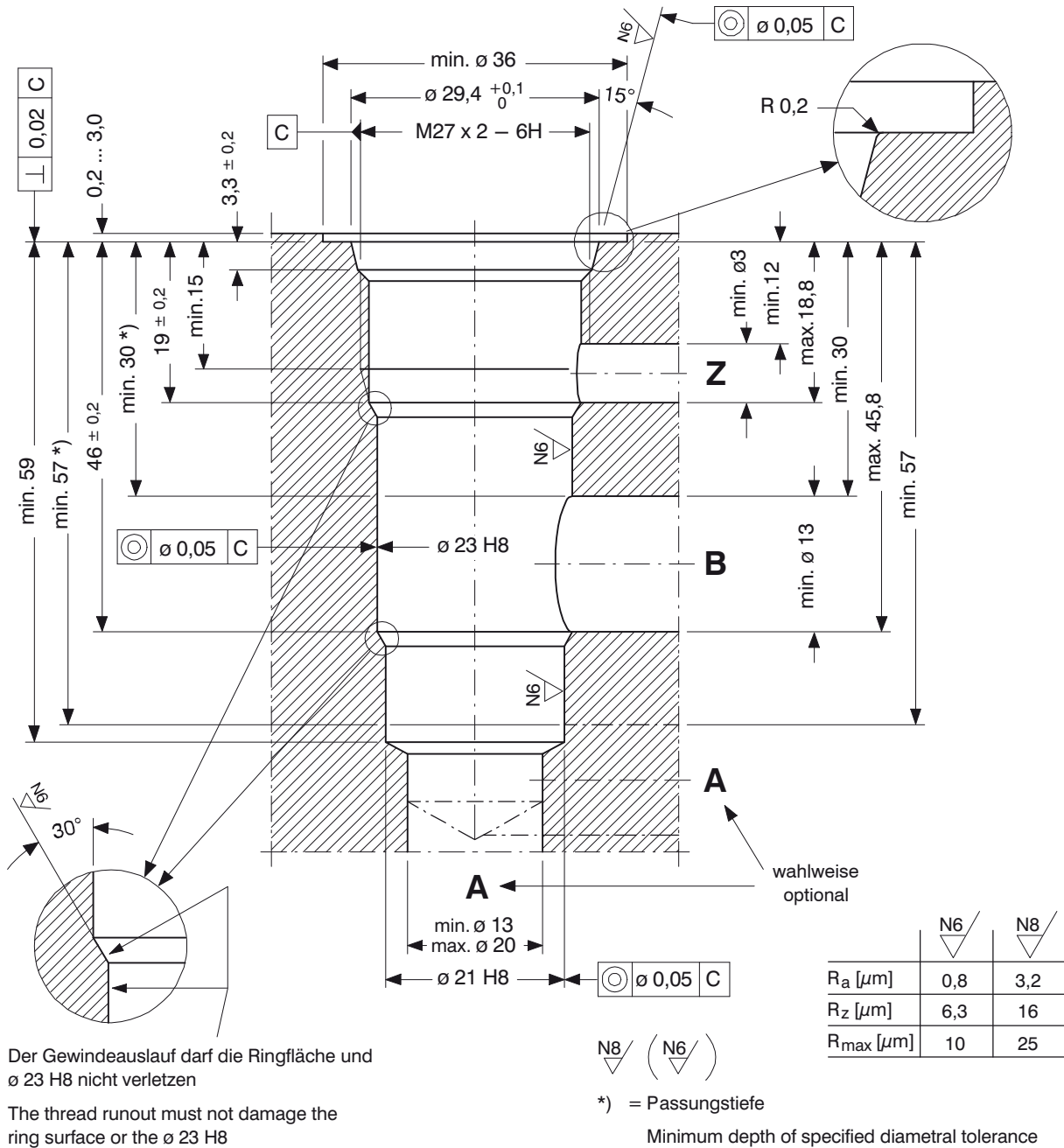


Cavity Type DJ



Der Gewindeauslauf darf die Ringfläche und $\varnothing 23$ H8 nicht verletzen

The thread runout must not damage the ring surface or the $\varnothing 23$ H8



Important

For improved Δp values, we recommend the cavity type with an annular groove in the B stage (see overleaf).

1 Machining notes



Attention

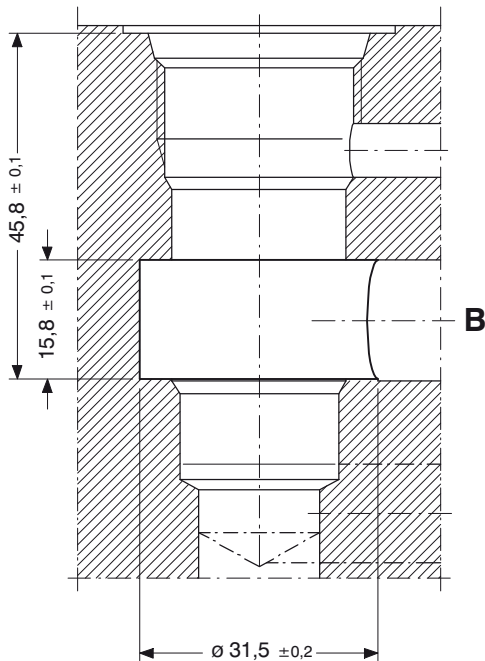
You must maintain the specified positional and diametral tolerances. To ensure trouble-free operation of the screw-in cartridges, we strongly recommend that pilot drilling, form boring, form reaming and cavity thread-cutting are always performed in one setup.



Important

We offer form tool sets for sale or hire. For further information, see data sheet 400-P-040011-E.

2 Cavity type with annular groove

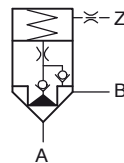
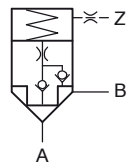
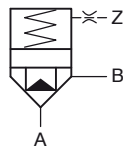
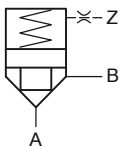


Important

For improved Δp values, we recommend the cavity type with an annular groove in the B stage.

3 Cartridge valves

2/2 logic cartridge valves



WL22SD ... -10 ...

WL22SDU ... -10 ...

WL22SDS1 ... -10 ...

WL22SDPN ... -10 ...

WL22SDLN ... -10 ...

WL22SDRN ... -10 ...

info.ch@bucherhydraulics.com

www.bucherhydraulics.com

© 2015 by Bucher Hydraulics AG Frutigen, CH-3714 Frutigen

All rights reserved.

Data is provided for the purpose of product description only, and must not be considered as warranted characteristics in the legal sense.

The information does not relieve users from the duty of conducting their own evaluations and tests. Because the products are subject to continual improvement, we reserve the right to amend the product specifications contained in this catalogue.