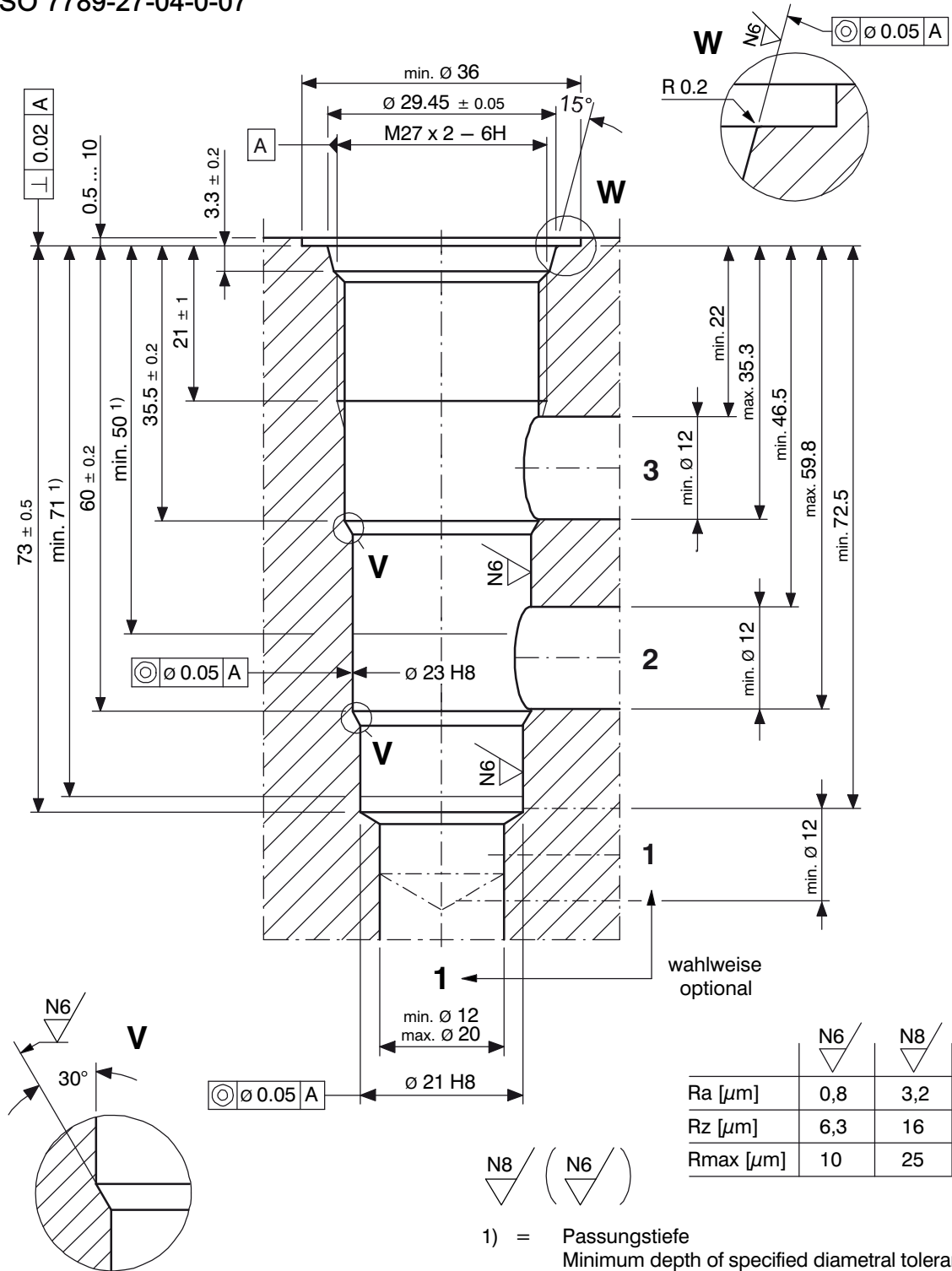


Cavity Type DL

to ISO 7789-27-04-0-07



1 Machining notes



Attention:

You must maintain the specified positional and diametral tolerances. To ensure trouble-free operation of the screw-in cartridges, we strongly recommend that pilot drilling, form boring, form reaming and cavity thread-cutting are always performed in one setup.

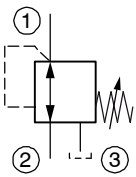


Important:

We offer form tool sets for sale or hire. For further information, see data sheet 400-P-040011-E.

2 Cartridge valves

3 way pressure reducing cartridge



DDRA-7L-10...