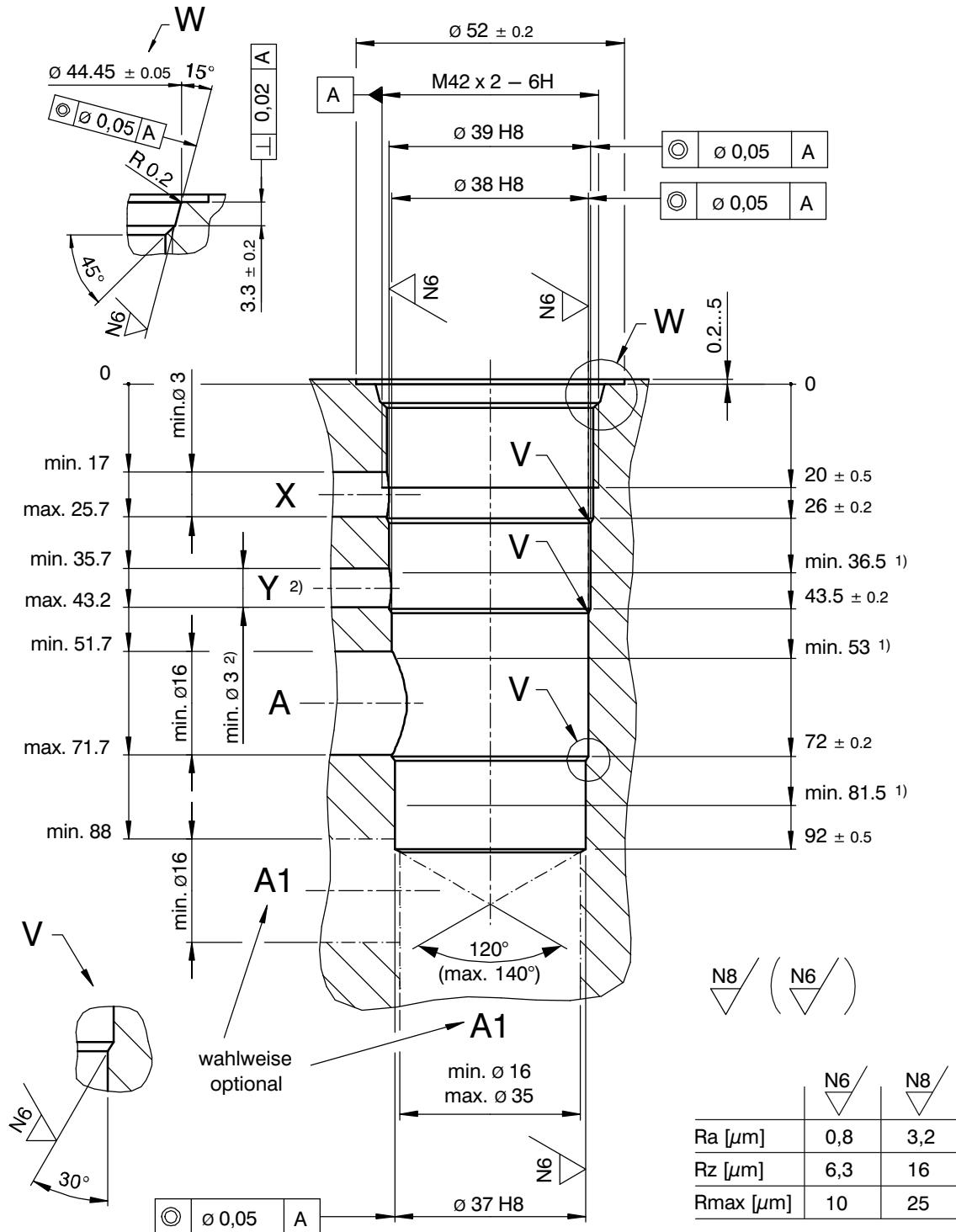


Cavity Type EC / ECY

• Without port Y = type EC

• With port Y = type ECY



1) = Minimum depth of specified diametral tolerance

2) = The port Y is present in cavity type ECY only

1 Machining notes



ATTENTION!

You must maintain the specified positional and diametral tolerances. To ensure trouble-free operation of the screw-in cartridges, we strongly recommend that pilot drilling, boring, reaming and cavity thread-cutting are always performed in one setup.

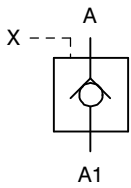


IMPORTANT!

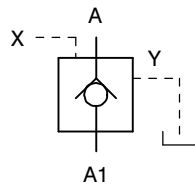
We offer form tool sets for sale or hire. For further information, see data sheet 400-P-040011-EN.

2 Cartridge valves

Check valve cartridges, pilot operated



REPNB-16- ...
(Cavity type EC)



REPYB-16- ...
(Cavity type ECY)