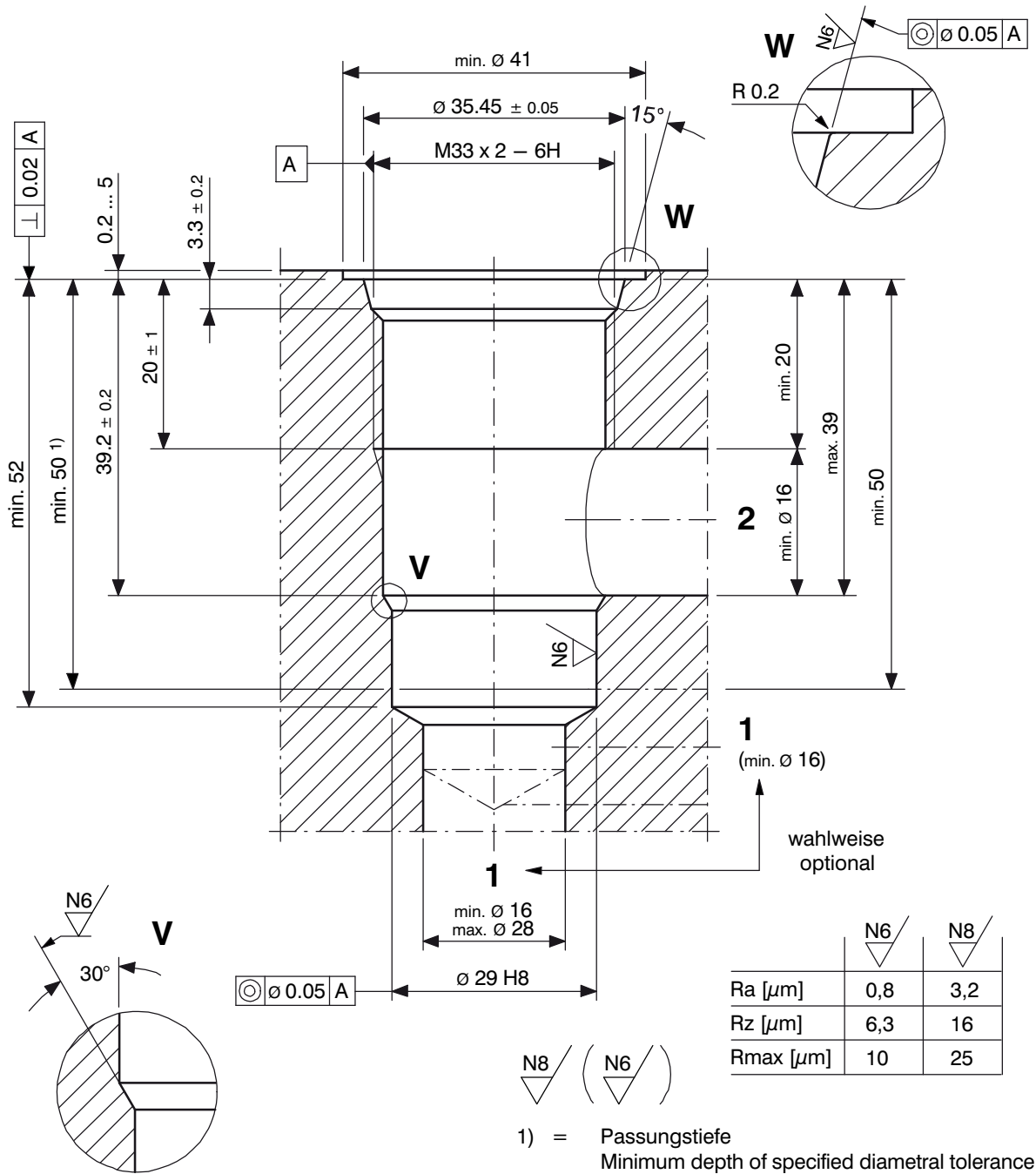


Cavity Type ER
to ISO 7789-33-01-0-07



1 Machining notes



ATTENTION!

You must maintain the specified positional and diametral tolerances. To ensure trouble-free operation of the screw-in cartridges, we strongly recommend that pilot drilling, boring, reaming and cavity thread-cutting are always performed in one setup.



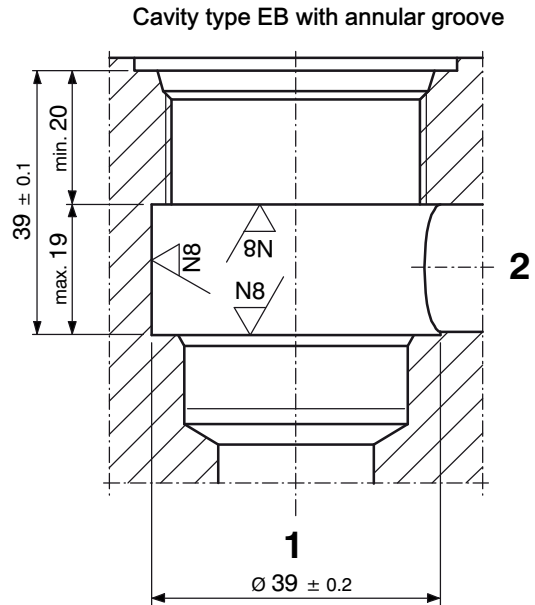
ATTENTION!

For improved Δp values with directional and logic valves, use the cavity with an annular groove in the 2 stage.



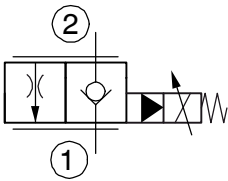
IMPORTANT!

We offer form tool sets for sale or hire. For further information, see data sheet 400-P-040011-EN.



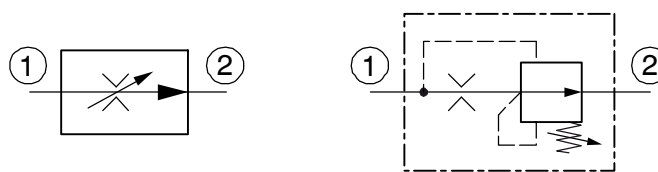
2 Cartridge valves

Proportional-throttle cartridge



MVRPSB...-RG-16...

2-Way Flow-Control Cartridge



MRP-2-10...