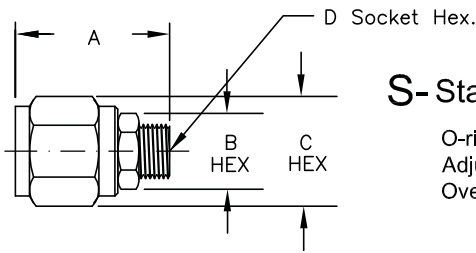
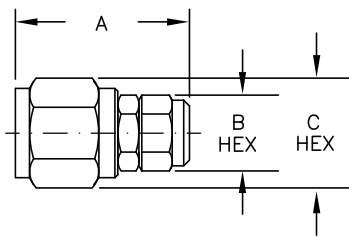


Adjustment Control Options



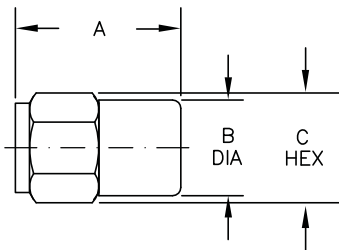
S- Standard Screw Adjustment

O-ring and back-up washer are standard. (No leak)
Adjusting screw positively retained. (Will not back out)
Overset pressure protection. (Spring will not go solid)



C- Capped Screw Adjustment

Add cap nut (See Chart) on to "S" adjustment. Protects the adjusting screw from dirt or damage.



T- Tamperproof Adjustment

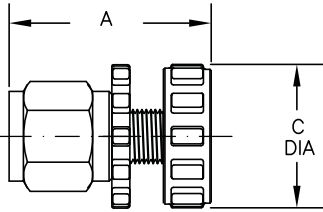
Press-fit steel cover (See Chart) on to "S" adjustment. Specify pressure setting on order. Model number with pressure setting will be stamped on hex.

CAP NUT PART NUMBER	
8 SERIES	20858
10 SERIES	20085
12 SERIES (PILOT OPERATED)	20085
12 SERIES (DIRECT ACTING)	20503
16 SERIES	20982

STEEL COVER PART NUMBER	
8 SERIES	20859
10 SERIES	20086
12 SERIES (PILOT OPERATED)	20593
12 SERIES (DIRECT ACTING)	20593
16 SERIES	20981

VALVE SIZE	OPTION LETTER	A		B		C		D	
		INCHES	METRIC	INCHES	METRIC	INCHES	METRIC	INCHES	METRIC
8 SERIES	S	1.62	41.1	0.79	20.1	1.15	29.2	0.31	7.9
	C	1.83	46.5	0.79	20.1	1.15	29.2	---	---
	T	1.74	44.2	1.00	25.4	1.15	29.2	---	---
10 SERIES	S	1.75	44.5	0.75	19.1	1.06	26.9	0.31	7.9
	C	1.98	50.3	0.75	19.1	1.06	26.9	---	---
	T	1.88	47.8	1.06	26.9	1.06	26.9	---	---
12 SERIES (PILOT OPERATED)	S	1.81	46.0	0.75	19.1	1.31	33.3	0.31	7.9
	C	2.03	51.6	0.75	19.1	1.31	33.3	---	---
	T	1.95	49.5	1.31	33.3	1.31	33.3	---	---
12 SERIES (DIRECT ACTING)	S	1.94	49.3	0.88	22.2	1.31	33.3	0.31	7.9
	C	2.20	55.9	0.88	22.2	1.31	33.3	---	---
	T	1.31	33.3	1.31	33.3	1.31	33.3	---	---
16 SERIES	S	2.40	61.0	1.13	28.7	1.50	38.1	0.31	7.9
	C	2.70	68.6	1.13	28.7	1.50	38.1	---	---
	T	2.50	63.5	1.50	38.1	1.50	38.1	---	---

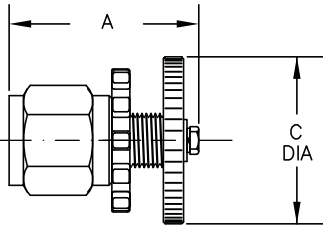
Adjustment Control Options



K-Plastic Handknob & Plastic Locknob

Remove jam nut and add handknob kit (See Chart) on to standard "S" adjustment. Patented locking device (Pat. 5,546,980) will not allow the knob to slip and turn on the adj. screw.

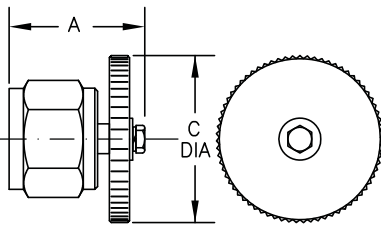
PLASTIC HANDKNOB KIT PART NUMBER	
8 SERIES	60192
10 SERIES	60081
12 SERIES (PILOT OPERATED)	60081



M-Metal Handknob & Plastic Locknob

Remove jam nut and add handknob kit (See Chart) on to standard "S" adjustment. Patented locking device (Pat. 5,546,980) will not allow the knob to slip and turn on the adj. screw.

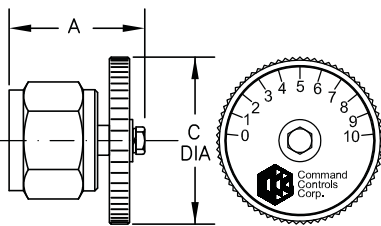
METAL HANDKNOB KIT PART NUMBER	
8 SERIES	60203
10 SERIES	60202
12 SERIES (PILOT OPERATED)	60202



H-Metal Handknob Without Locknob

Square broached hole in knob fits over square on adjusting screw, preventing the knob from slipping or turning.

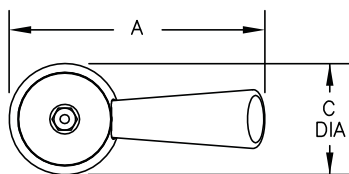
METAL HANDKNOB KIT PART NUMBER	
8 SERIES	60207
10 SERIES	60207
12 SERIES	---



G-Graduated Metal Handknob Without Locknob

Square broached hole in knob fits over square on adjusting screw, preventing the knob from slipping or turning.

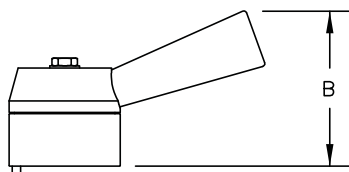
GRADUATED METAL HANDKNOB KIT PART NUMBER	
8 SERIES	---
10 SERIES	60206
12 SERIES	---



L-Manual Rotary Lever with Friction Lock

Square broached hole in knob fits over square on adjusting screw, preventing the knob from slipping or turning.

ROTARY LEVER KIT PART NUMBER	
8 SERIES	--
10 SERIES	60209
12 SERIES	--



D-Manual Rotary Lever with Detents

Square broached hole in knob fits over square on adjusting screw, preventing the knob from slipping or turning. Detents are evenly spaced to provide accurate flow control.

ROTARY LEVER KIT WITH DETENTS PART NUMBER	
8 SERIES	--
10 SERIES	60208
12 SERIES	--

Locating pin included; consult factory for details

VALVE SIZE	VALVE MODEL	OPTION LETTER	A		B		C		D	
			INCHES	METRIC	INCHES	METRIC	INCHES	METRIC	INCHES	METRIC
8 SERIES		K	2.12	53.8	---	---	1.50	38.1	---	---
		M	2.01	51.1	---	---	1.75	44.5	---	---
	NFCV08 ONLY	H	1.89	48.0	---	---	1.75	44.5	---	---
10 SERIES		K	2.25	57.2	---	---	1.50	38.1	---	---
		M	2.14	54.4	---	---	1.75	44.5	---	---
	MRFC10 ONLY	G	1.58	40.1	---	---	1.75	44.5	---	---
	NFCV10 ONLY	H	1.99	50.5	---	---	1.75	44.5	---	---
	MRFC10 ONLY	D & L	4.32	109.7	2.62	66.6	1.88	47.6	---	---
12 SERIES (PILOT OPERATED)		K	2.31	58.7	---	---	1.50	38.1	---	---
		M	2.20	55.9	---	---	1.75	44.5	---	---