

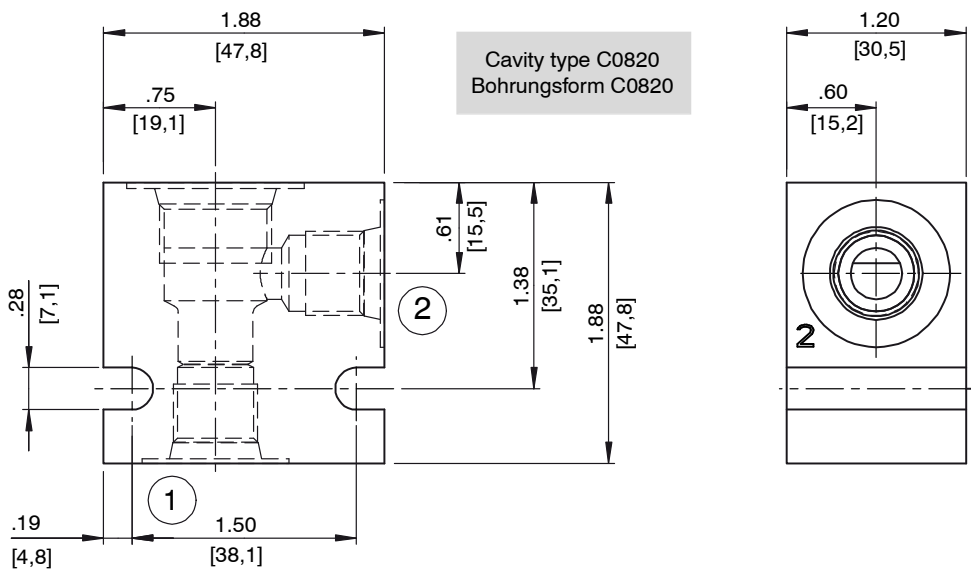
Line-Mounting Body, Size SAE 08 / NG 5

Type: 8 Series - 2-Way

1 Technical data

| Ordering code | Description | Material | Maximum operating pressure | Weight | Port 1 | Port 2 |
|--|-------------|-----------|----------------------------|-----------------------|-----------------|-----------------|
| 06TA | 30402 | Aluminium | 3000 psi [210 bar] | .320 lbs [0.15 kg] | SAE-6 | SAE-6 |
| 06TS | 30414 | Steel | 5000 psi [350 bar] | .932 lbs [0.40 kg] | SAE-6 | SAE-6 |
| <i>Available on request for quantities > 100 pieces/year.</i> | | | | | | |
| 02BA | 30401 | Aluminium | 3000 psi [210 bar] | .328 lbs [0.15 kg] | G 1/4" -19 BSPP | G 1/4" -19 BSPP |
| 02BS | 30413 | Steel | 5000 psi [350 bar] | .956 lbs [0.45 kg] | G 1/4" -19 BSPP | G 1/4" -19 BSPP |

2 Dimensions & sectional view



3 Related data sheets

| Reference | (Old no.) | Description |
|--------------|-----------|-------------------|
| 520-P-000110 | (0-011.0) | Cavity type C0820 |

info.el@bucherhydraulics.com

www.bucherhydraulics.com/commoncavity

© 2018 by Bucher Hydraulics, Inc., 2545 Northwest Parkway, Elgin, Illinois 60124, USA

All rights reserved.

Data is provided for the purpose of product description only, and must not be construed as warranted characteristics in the legal sense. The information does not relieve users from the duty of conducting their own evaluations and tests. Because the products are subject to continual improvement, we reserve the right to amend the product specifications contained in this catalogue.

Classification: 430.395.-.-.-.

Reference: 520-P-000111-EN-02