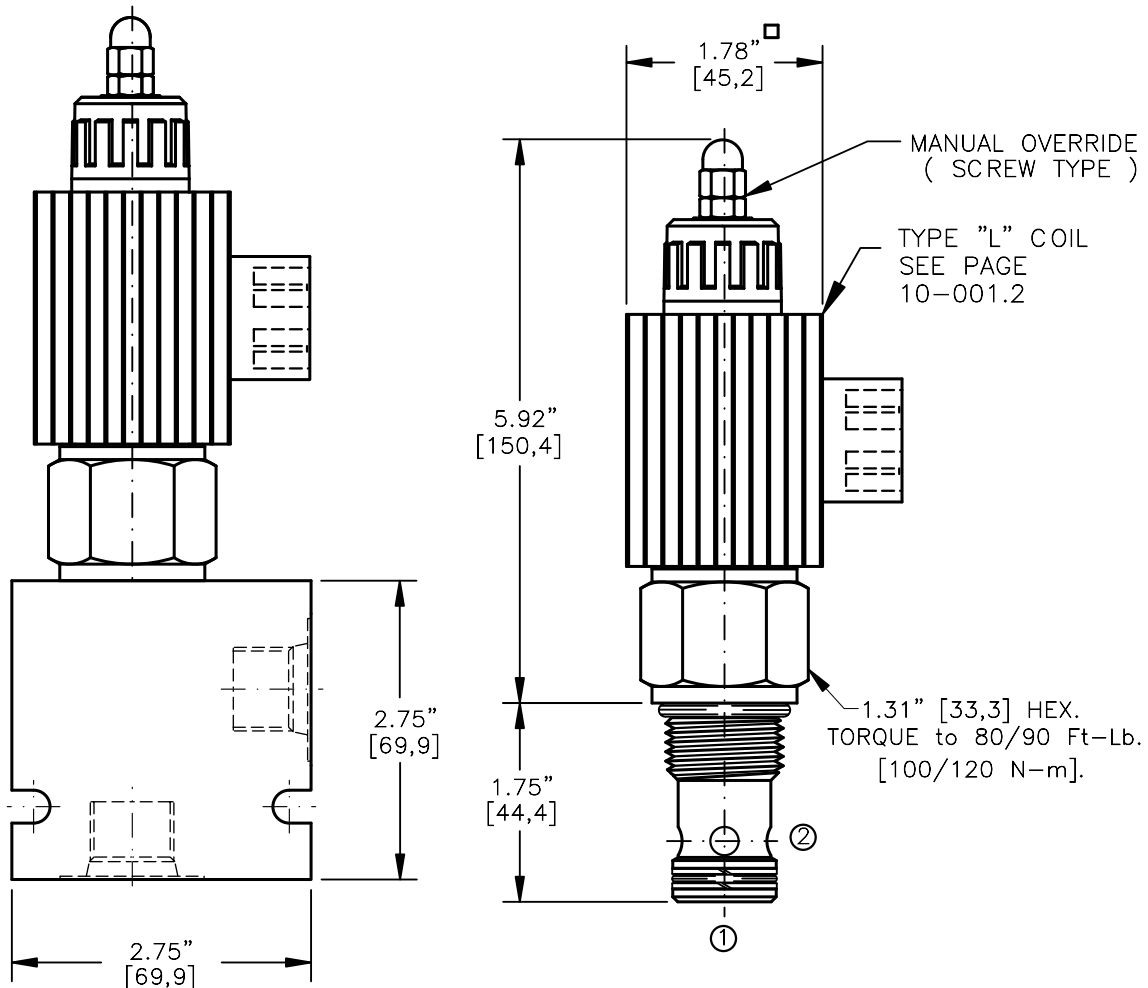
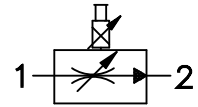


ELECTRO-HYDRAULIC, PROPORTIONAL,
PRESSURE COMP, FLOW CONTROL VALVE.



- NOTES:
 1. FOR ALUMINUM OR STEEL VALVE HOUSING CONFIGURATIONS SEE PAGE 0-013.1
 2. SOLENOIDS AVAILABLE WITH DIODES - CONSULT FACTORY.

EPFI-12-N-X-XX-X-X-XXX X

BASIC
 SIZE
 12=1.062"-12UNF

SEALS
 N = BUNA "N"
 V = VITON

TYPE
 C = NORMALLY CLOSED
 O = NORMALLY OPEN

REGULATED FLOW
 05 = 0 TO 5.0 GPM
 10 = 0 TO 10.0 GPM
 15 = 0 TO 15.0 GPM

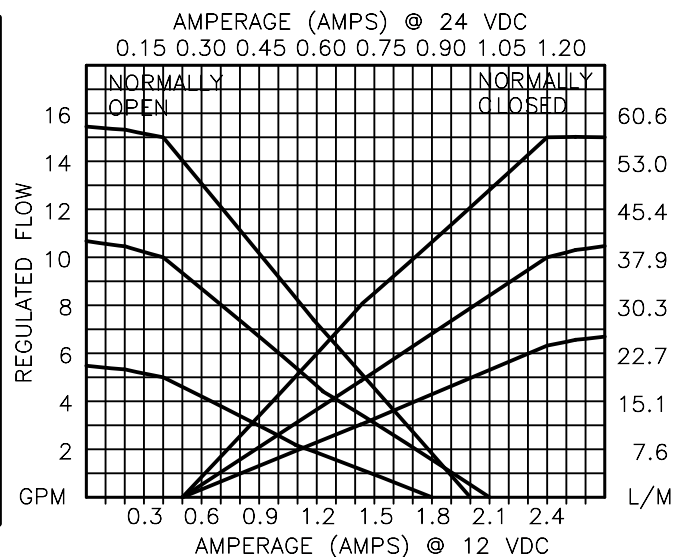
TERMINALS
 L=18GA. 24" LEADS
 T=SPADE TERM.
 B=BOLT TERM.
 G=DIN43650
 W=WEATHER-PACK
 D=DEUTSCH-DT04-2P
 M=METRI-PACK CONN

VOLTAGE AMPS
 12D = 12 VDC 3.00
 24D = 24 VDC 1.50

ADJUSTMENT OPTIONS
 0 = NONE
 M = MANUAL OVERRIDE

PORTS
 0 = CARTRIDGE
 4BX = G 1/2" BSPP
 6BX = G 3/4" BSPP
 10TX = SAE - #10
 12TX = SAE - #12

"A" - ALUM. HOUSING
 "S" - STEEL HOUSING



**PROPORTIONAL, PRESSURE COMPENSATED,
FLOW CONTROL VALVE.**

DESCRIPTION

This valve is a cartridge style, electro-hydraulic, proportional, in-line (RESTRICTIVE) type, pressure compensated, hydraulic flow control. Regulated flow 15.0 GPM [56,8 l/m] max. is proportional to the current input regardless of load or system pressure.

OPERATIONS

This unit is a direct acting (NO PILOT FLOW), electro hydraulic, proportional, pressure compensated flow control valve. When the coil is energized, the armature moves the metering orifice open against a precision bias spring varying the flow. A pressure compensator spool (HYDROSTAT) modulates the flow at 100 PSI/6,9 Bar delta "P" providing the valve with a constant regulated flow regardless of load or system pressure. For the normally closed product when the current is increased to the coil, the flow will increase. For the normally open product as the current is increased to the coil the flow will decrease. IN THE EVENT OF POWER FAILURE, THE NORMALLY CLOSED VALVE WILL CLOSE AND THE NORMALLY OPEN VALVE WILL OPEN.

FEATURES AND BENEFITS

Continuous-duty, very low heat rise & waterproof solenoid coil.
Interchangeable solenoid coils & termination options available.
Hardened precision fitted spool & sleeve provides reliable, long life.
Very efficient wet – armature solenoid core tube construction.
All external carbon steel parts are plated for longer life against the elements.
All cartridge valves are 100% functionally tested.

**PROPORTIONAL, PRESSURE COMPENSATED,
FLOW CONTROL VALVE.**

SPECIFICATIONS

OPERATING PRESSURE: 5,000 PSI [350 Bar]

PROOF PRESSURE: 10,000 PSI [700 Bar]

REGULATED FLOW: 15.0 GPM [56,8 l/m] Max. See performance chart.

INTERNAL LEAKAGE: 20/40 in³/min [328/655 cc/m] @ 3/5K PSI [175/350 Bar]

VALVE HOUSINGS: 2500 PSI [175 Bar] = Aluminum – Anodized.

5000 PSI [350 Bar] = Steel – Unplated.

OPERATING TEMPERATURE: -40° to +250° F. [-40° to +120° C.]

OPERATING MEDIA: All general purpose hydraulic fluids such as
MIL-H-5606, SAE-#10, SAE-#20, etc.

RESPONSE: The most efficient method to control this valve is with
current control and a 50 Hz dither.

POWER REQUIREMENTS: 12 VDC, Operating current 0.2 to 2.2 AMPS.

24 VDC, Operating current 0.1 to 1.1 AMPS.

SEAL KIT: SKN-1222 Buna "N"

SKV-1222 Viton

INSTALLATION: No restrictions.

WEIGHT: 2.27 lb [1,03 kg] cartridge with coil only.

VALVE CAVITY: #C1220, See Page 0-013.0.

info.el@bucherhydraulics.com

www.bucherhydraulics.com/commoncavity

© 2015 by Bucher Hydraulics, Inc., 2545 Northwest Parkway, Elgin, Illinois 60124, USA

All rights reserved.

The technical information in this catalog, may contain calculated figures (for reference only) and not actual performance data for this product.

Data is provided for the purpose of product description only, and must not be construed as warranted characteristics in the legal sense.

The information does not relieve users from the duty of conducting their own evaluations and tests. Because the products are subject to continual improvement, we reserve the right to amend the product specifications contained in this catalogue.