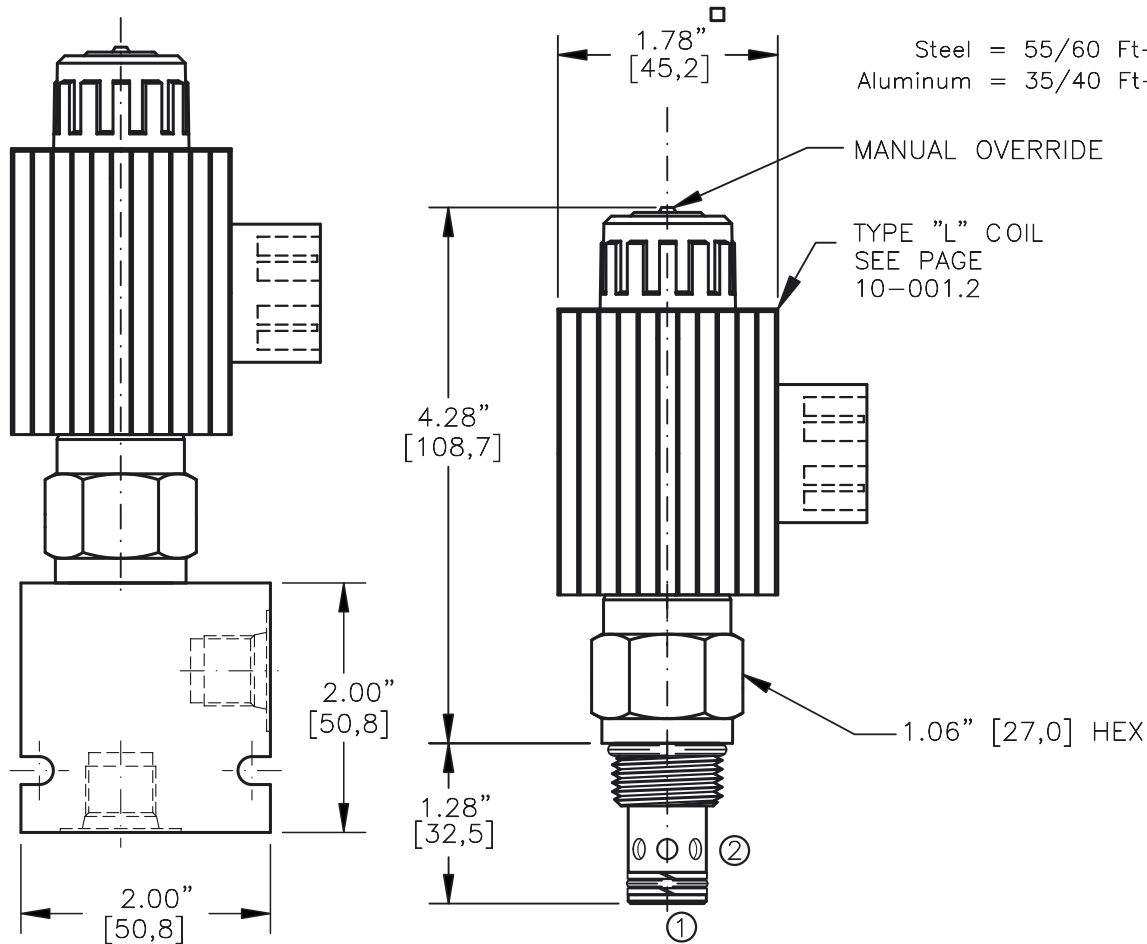
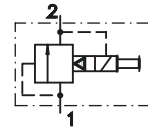


NORMALLY OPEN SOLENOID VENTED RELIEF VALVE, PILOT OPERATED, SPOOL TYPE (2/2)



TORQUE:

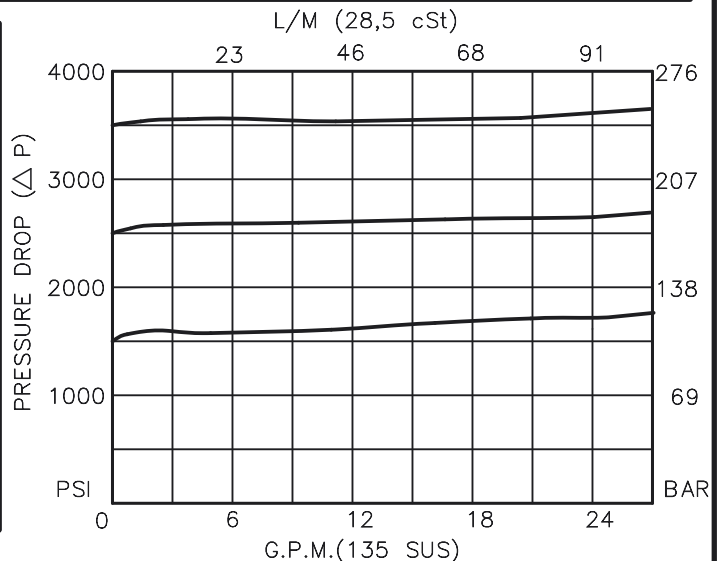
Steel = 55/60 Ft-Lb. [74/81 Nm]  
Aluminum = 35/40 Ft-Lb. [47/54 Nm]

NOTES:

1. FOR ALUMINUM OR STEEL VALVE HOUSING CONFIGURATIONS SEE PAGE 0-012.1
2. SOLENOIDS AVAILABLE WITH DIODES - CONSULT FACTORY.
3. ALL A.C. COILS ARE INTERNALLY A.C. TO D.C. RECTIFIED...
4. FOR CONTINUOUS ENERGIZED OR HIGH AMBIENT TEMPERATURE (>120°F) APPLICATION CONSULT FACTORY FOR FURTHER DETAILS

ESRV-10-X-XX-X-XXX X

BASIC	TERMINALS
SIZE	L = 18GA. 24" LEADS
10 = 7/8"-14UNF	T = SPADE TERM.
SEALS	B = BOLT TERM.
N = BUNA "N"	G = DIN43650
V = VITON	W = WEATHER-PACK
REGULATED PRESSURE	D = DEUTSCH-DT04-2P
10 = 1000 PSI	M = METRI-PACK CONN.
15 = 1500 PSI	
20 = 2000 PSI	VOLTAGE
25 = 2500 PSI	AMPS
30 = 3000 PSI	12D = 12 VDC 3.00
35 = 3500 PSI	24D = 24 VDC 1.50
* FOR CUSTOM	36D = 36 VDC 1.00
SETTINGS	48D = 48 VDC 0.75
CONSULT	110D = 110 VDC 0.33
FACTORY	115A = 115 VAC 0.32
	230A = 230 VAC 0.16
	PORTS
	0 = CARTRIDGE ONLY
	02BX = G 1/4" BSPP
	03BX = G 3/8" BSPP
	06TX = SAE - #6
	08TX = SAE - #8
	"A" = ALUM. HOUSING
	"S" = STEEL HOUSING



## NORMALLY OPEN SOLENOID VENTED RELIEF VALVE, PILOT OPERATED, SPOOL TYPE (2/2)

### DESCRIPTION

This unit is a NORMALLY OPEN, TWO POSITION, cartridge type, spool type, pilot operated, screw in type, solenoid operated, hydraulic relief valve.

### OPERATIONS

When the solenoid coil is de-energized, this valve allows flow from port 1 to port 2 (tank). When the solenoid coil is energized this valve blocks flow from port 1 to port 2. When the solenoid coil is energized and the pressure at port 1 exceeds the relief pressure setting, this valve will open and allow flow from port 1 to port 2.

Manual Operator Standard: Push in and hold a small plunger on top of the valve with a screw driver or a similar plunger smaller than .188" dia.

### FEATURES AND BENEFITS

Continuous-duty, very low heat rise & waterproof solenoid coil.

Interchangeable solenoid coils & terminations options available.

Pressure in tank port (2) will add to the bias spring setting, and is limited to 2000 PSI.

Hardened precision fitted spool & sleeve provides reliable, long life.

A unique self aligning (floating) cage provides very low hysteresis and reliable operation.

Very efficient, wet-armature solenoid core tube construction.

All external carbon steel parts are plated for longer life against the elements.

All cartridge valves are 100% functionally tested.

Industry common cavity.

### SPECIFICATIONS

OPERATING PRESSURE: 5000 PSI [350 Bar]

PROOF PRESSURE: 10,000 PSI [700 Bar]

FLOW: 26.0 GPM [100 L/M] nominal. See performance chart.

INTERNAL LEAKAGE: 5 cu.in/min [85 cc/m] @ 95% of crack pressure.

INTERNAL PILOT FLOW: 60 cu.in/min [1,0 l/m] @ 3000 PSI [210 Bar]

VALVE HOUSINGS: 2500 PSI [175 Bar] = Aluminum - Anodized.

5000 PSI [350 Bar] = Steel - Unplated.

OPERATING TEMPERATURE: -40° to +250° F. [-40° to +120° C.]

OPERATING MEDIA: All general purpose hydraulic fluids such as MIL-H-5606, SAE-#10, SAE-#20, etc.

SEAL KIT: SKN-1022 Buna "N"

SKV-1022 Viton

INSTALLATION: No restrictions.

WEIGHT: 1.90 lb [0,86 kg] cartridge with coil only.

VALVE CAVITY: #C1020, See Page 0-012.0.

info.el@bucherhydraulics.com

www.bucherhydraulics.com/commoncavity

© 2015 by Bucher Hydraulics, Inc., 2545 Northwest Parkway, Elgin, Illinois 60124, USA

All rights reserved.

Data is provided for the purpose of product description only, and must not be construed as warranted characteristics in the legal sense. The information does not relieve users from the duty of conducting their own evaluations and tests. Because the products are subject to continual improvement, we reserve the right to amend the product specifications contained in this catalogue.