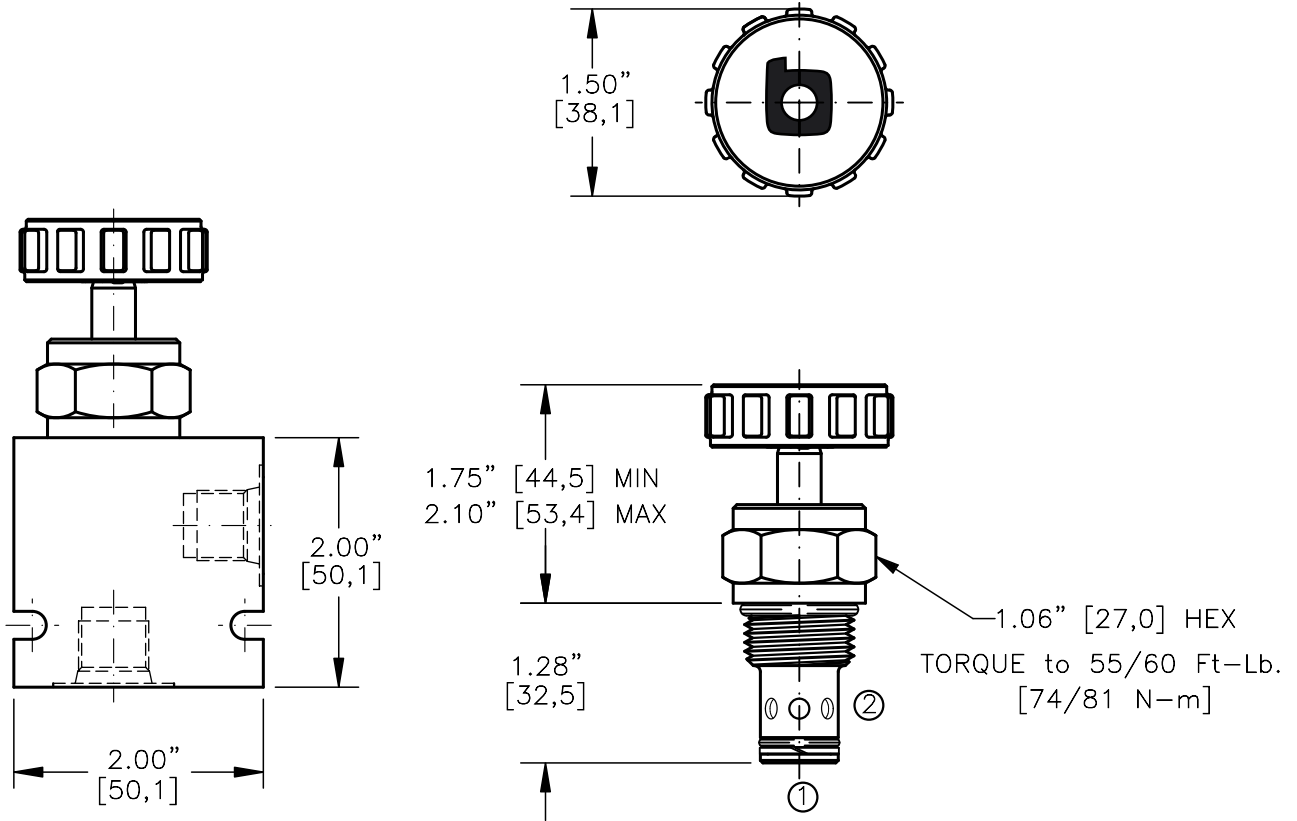
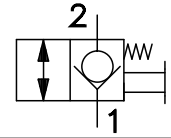


MANUAL RELEASE VALVE
PULL TO OPEN

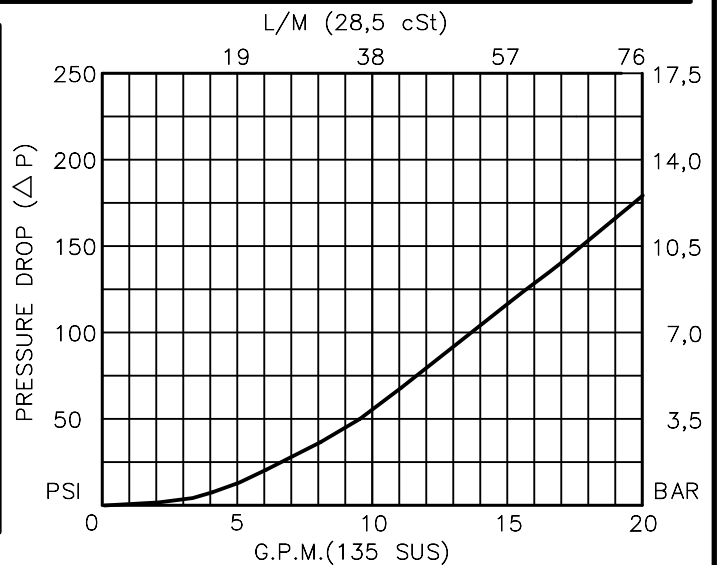


FOR ALUMINUM OR STEEL VALVE HOUSING CONFIGURATIONS SEE PAGE 0-012.1

MRPV-10-X-X-X

- BASIC
- SIZE
10 = 7/8"-14UNF
- SEALS
N = BUNA "N"
V = VITON
- ADJUSTMENT
H = METAL HANDKNOB
K = HANDKNOB
0 = NO KNOB
- PORTS = CARTRIDGE ONLY
0 = G 1/4" BSPP
02BX = G 3/8" BSPP
03BX = SAE - #6
06TX = SAE - #8
08TX "A" = ALUM. HOUSING
"S" = STEEL HOUSING

FOR ADJUSTMENT CONTROL OPTIONS SEE PAGE 0-050.1



**MANUAL RELEASE VALVE
PULL TO OPEN****DESCRIPTION**

This unit is a SCREW IN, cartridge type, guided poppet, spring biased closed, pull to open, hydraulic manual release valve.

OPERATIONS

This valve allows free flow from port 1 to port 2 at 175 PSI [12,0 BAR] and blocks flow from port 2 to port 1 or holding a load.

FEATURES AND BENEFITS

Low effort leakproof valve stem; knob is optional.
Pull to open mechanical effort at rated pressure is 17.5 LBS [8,0 KG.]
All external carbon steel parts are plated for longer life against the elements.
All cartridge valves are 100% functionally tested.
Industry common cavity.

SPECIFICATIONS

OPERATING PRESSURE: 5,000 PSI [350 Bar]

PROOF PRESSURE: 10,000 PSI [700 Bar]

FLOW: 18.0 GPM [70 l/m] nominal. See performance chart.

INTERNAL LEAKAGE: 5 drops per minute maximum @ 5,000 PSI (350 Bar)

VALVE HOUSINGS: 2500 PSI [175 Bar] = Aluminum – Anodized.

5000 PSI [350 Bar] = Steel – Unplated.

OPERATING TEMPERATURE: -40° to +250° F. [-40° to +120° C.]

OPERATING MEDIA: All general purpose hydraulic fluids such as
MIL-H-5606, SAE-#10, SAE-#20, etc.

INSTALLATION: No restrictions.

SEAL KIT: SKN-1021 Buna "N".

SKV-1021 Viton.

WEIGHT: .31 lb [.14 kg] cartridge only.

VALVE CAVITY: #C1020, See Page 0-012.0.

info.el@bucherhydraulics.com

www.bucherhydraulics.com/commoncavity

© 2015 by Bucher Hydraulics, Inc., 2545 Northwest Parkway, Elgin, Illinois 60124, USA

All rights reserved.

Data is provided for the purpose of product description only, and must not be construed as warranted characteristics in the legal sense. The information does not relieve users from the duty of conducting their own evaluations and tests. Because the products are subject to continual improvement, we reserve the right to amend the product specifications contained in this catalogue.