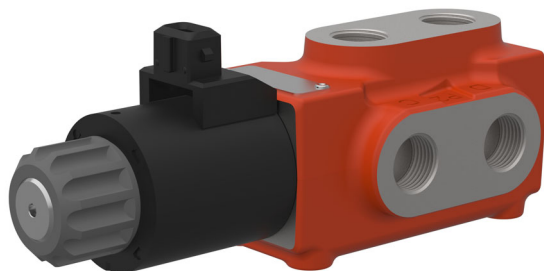


6/2 Directional Control Valve

Serie WV06



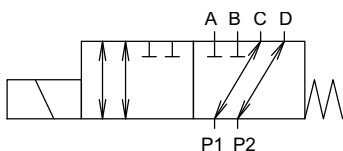
- compact design
- low pressure losses
- reliable functionality
- easy installation
- proven design

1 Description

The WV06 is an electromagnetically On/Off actuated, directly controlled directional control valve which allows an upstream directional valve to control either of two actuators. In most applications it is used as an intermediate unit

between the two actuators and the main directional valve. The valve can also be switched over manually by pressing the override pin.

2 Symbol



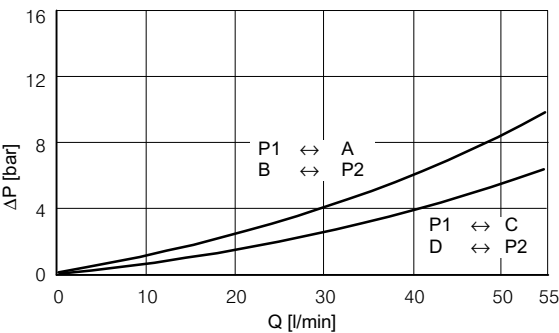
3 Technical Data

Hydraulic characteristics	Unit	Description, value
Flow rate	l/min	50 l/min
Operating pressure	bar	250 315 bar (with drain line) 160 bar (without drain line)
Internal leakage at 220 bar at 35 mm ² /s; Ports A, B, C, D	cm ³ /min	60
Operating temperature	°C	-20 ... +70
Viscosity	mm ² /s	15 ... 380
recommended filtration		25 µm abs.
Mounting attitude		unrestricted
Weight	kg	2,65

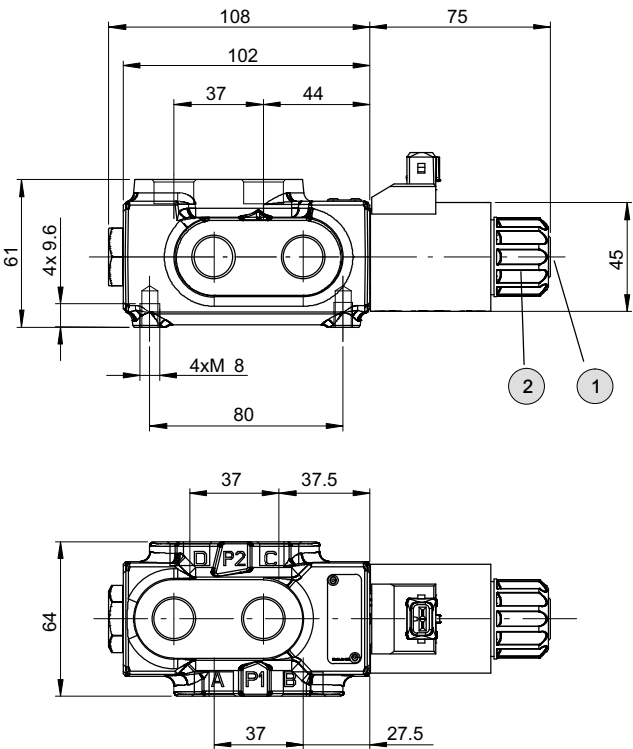
Electrical characteristics	Unit	Description, value
Power consumption	Watt	30
Duty cycle		100 %
Response time ON	ms	50
Response time OFF	ms	25
Enclosure protection DIN 40050		IP 67

4 Characteristic curves

measured at 35 mm²/s



5 Dimensions



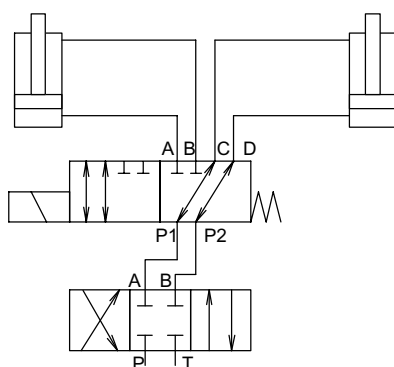
1 Manual override

2 $M_{A \max} = 6 \text{ Nm}$

6 Ordering Code

	WV	06	- 6/2 - *N	H	1	-	M18	J	12	-	...
Directional valve											
Size											
Spool type											
Manual override											
Design number (will be inserted by the factory)											
Port threads											
M18											
G38											
Plug connector											
J											
Supply voltage											
12											
24											
Option (will be inserted by the factory)											

7 Circuit diagram (example)



info.kl@bucherhydraulics.com

www.bucherhydraulics.com

© 2025 by Bucher Hydraulics GmbH, D-79771 Klettgau

All rights reserved.

Data is provided for the purpose of product description only, and must not be construed as warranted characteristics in the legal sense. The information does not relieve users from the duty of conducting their own evaluations and tests. Because the products are subject to continual improvement, we reserve the right to amend the product specifications contained in this catalogue.

Classification: 430.310.