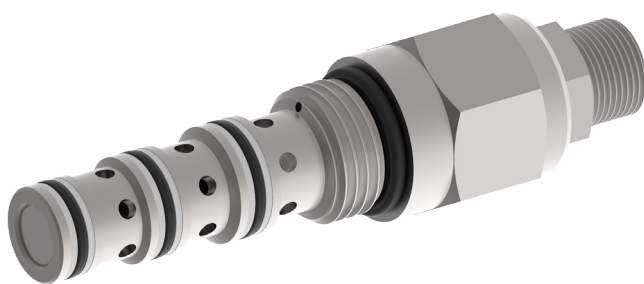


# Directional valve 3-way/2-position

$Q_{\max} = 46 \text{ l/min}$ ,  $p_{\max} = 350 \text{ bar}$

direct acting, spool type, hydraulic operation

Type series: DCPS-10-\_-B-...



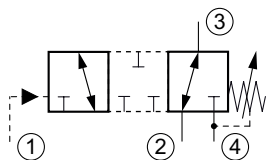
- Screw-in cartridge valve
- For cavity C1040
- All external parts zinc plated, chromited (CrVI-free)
- Installation in threaded port body type B1040
- Hardened precision fitted spool and sleeve provides reliable, long life
- Closed center transition
- This valve has a fixed or an adjustable bias spring
- A unibody cage construction provides very low hysteresis, dependable and reliable operation
- Adjustment screw can not be backed out of the valve

## Description

This unit is a direct acting, screw-in cartridge style, spool type, hydraulic 3-way directional control element, requiring remote pilot actuation. This valve allows flow from port 3 to port 2 with a spring biased spool. Port 4 is blocked. The spool will shift when pi-

lotted at port 1 with sufficient pressure to overcome the spring bias and allow flow from port 3 to port 4. Spring is vented to port 4. This valve shifts in a closed center position.

## Symbol



## Technical data

General Characteristics	Description, value, unit
Function group	Directional valve
Function	3-way/2-position
Design	Screw-in cartridge valve
Controls	hydraulic operation
Characteristic	direct acting, spool type
Transition/central position of spool/piston	zero or positive overlap (closed)
Construction size	SAE 10 / nominal size 8
Thread size	7/8-14 UNF-2A
Mounting attitude	unrestricted
Weight	0.21 kg
Cavity acc. factory standard	For cavity C1040
Tightening torque steel	77.5 Nm
Tightening torque aluminium	50.5 Nm
Tightening torque tolerance	± 5 %
Minimum ambient temperature	- 40 °C
Maximum ambient temperature	+ 120 °C
Surface protection	All external parts zinc plated, chromited (CrVI-free)
Available seal types	several seal types available, see ordering code
Seal kit order number	NBR: SKN-1042 / FKM: SKV-1042

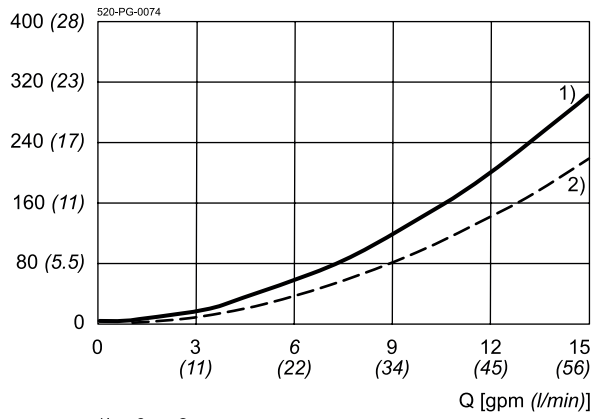
Hydraulic Characteristics	Description, value, unit
Maximum operating pressure	350 bar
Maximum flow rate	46 l/min
Flow direction	see symbol
Hydraulic fluid	All general purpose hydraulic fluids such as MIL-H-5606, SAE-#10, SAE-#20, etc.
Minimum fluid temperature	- 25 °C
Maximum fluid temperature	+ 80 °C
Viscosity range	10 ... 500 mm <sup>2</sup> /s (cSt)
Recommended viscosity range	20 ... 130 mm <sup>2</sup> /s (cSt)
Minimum fluid cleanliness (cleanliness class according to ISO 4406:1999)	class 18/16/13
Minimum set pressure	5.3 bar
Maximum set pressure	14 bar
Internal leakage flow rate	82 cc/min at 350 bar

## Performance graphs

measured with oil viscosity 28.5 mm<sup>2</sup>/s (cSt)

$\Delta p = f(Q)$  Pressure drop-flow rate characteristic

$\Delta p$  [psi (bar)]

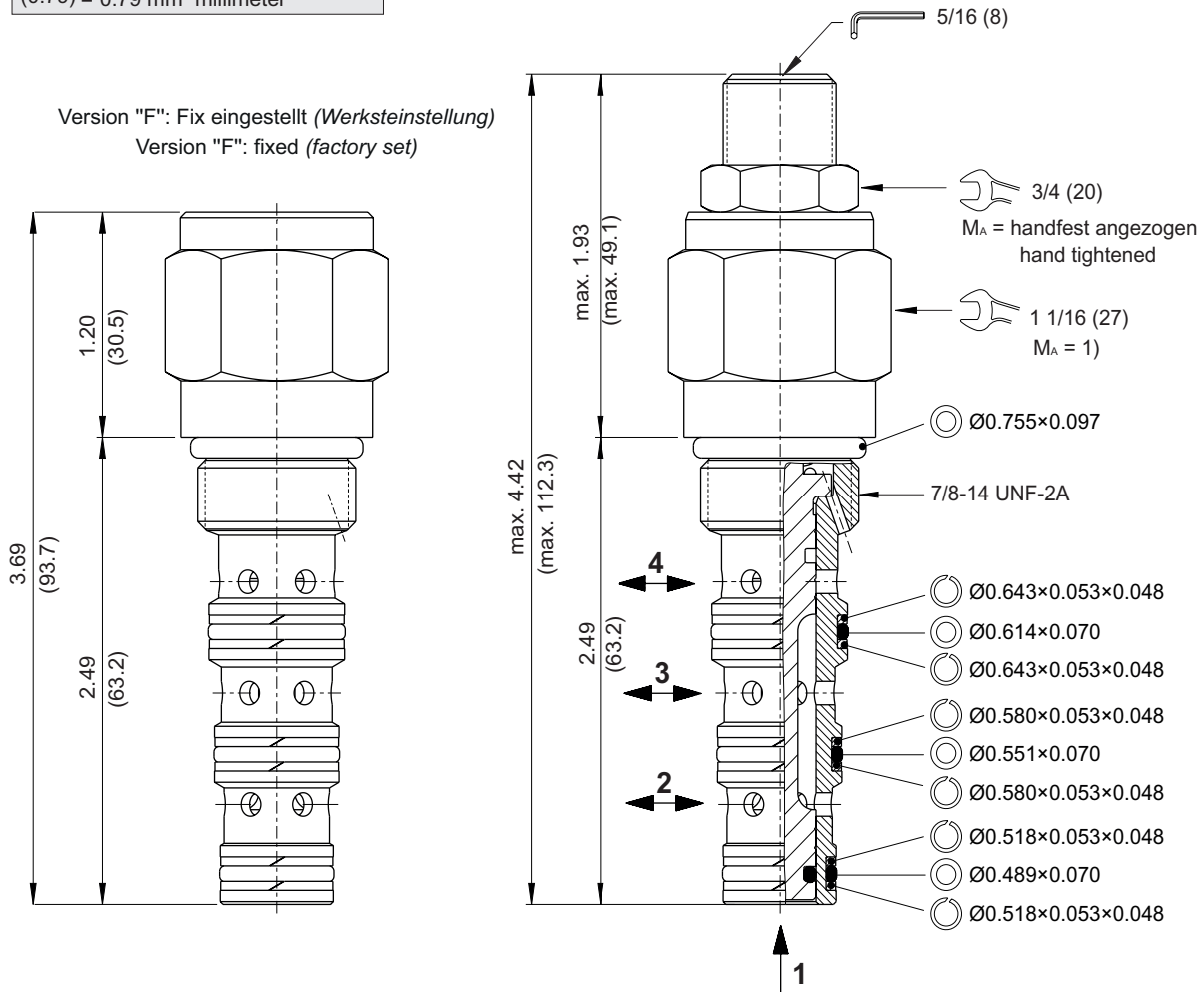


1) = 3 → 2  
2) = 3 → 4

Dimensions and sectional view

**Beispiel für die Masseinheit:**  
**Example for the dimensional units:**  
.031 = 0.031" inch  
(0.79) = 0.79 mm millimeter

Version "S": Einstellschraube (Standard)  
Version "S": adjustment screw (standard)



Installation information



**ATTENTION!**

Only qualified personnel with mechanical skills may carry out any maintenance work. Generally, the only work that should ever be undertaken is to check, and possibly replace, the seals. When changing seals, oil or grease the new seals thoroughly before fitting them.



**NOTE!**

1) When fitting the screw-in cartridge valve, use the specified tightening torque. The value can be found in the chapter "Technical data".



**NOTE!**

The seals are not available individually. The seal kit order number can be found in the chapter "Technical data".

Ordering code

e.g. DCPS - 10 - N - B - F - 0 - 075

DCPS = directional control valve, direct acting, cartridge design

10 = nominal size SAE 10 / NG 08

N = NBR (nitril-butadien-rubber / BUNA) seals (standard)

V = FKM (fluorocarbon rubber / VITON) seals  
(special seals - please consult BUCHER)

B = spool type "B"

F = fixed (factory set)

S = adjusting screw

C = capped

T = tamperproof

K = handknob

M = metal handknob

0 = screw-in cartridge only

06TA = line-mounting body aluminum SAE #06 ports

06TS = line-mounting body steel SAE #06 ports

08TA = line-mounting body aluminum SAE #08 ports

08TS = line-mounting body steel SAE #08 ports

075 = pressure range 75 psi (fixed)

100 = pressure range 100 psi (fixed)

200 = pressure range 75...200 psi (adjustable)

Related data sheets

Reference	Description
520-P-000050	Form tools
520-P-000420	Cavity C1040
520-P-000421	Threaded port body B1040
520-P-000500	Adjustment Control Options