

W-50 d

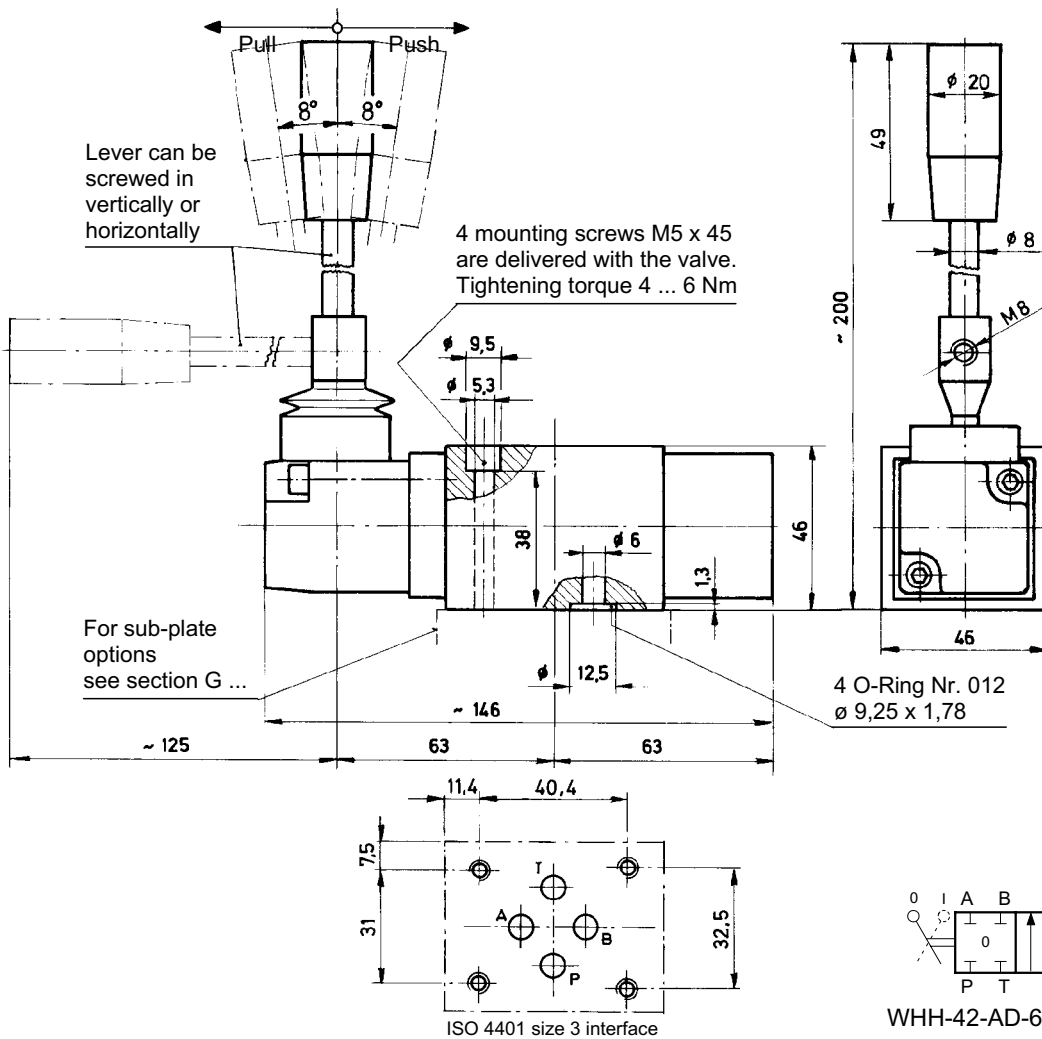
Lever operated directional valve NG 6

Series WHH ...

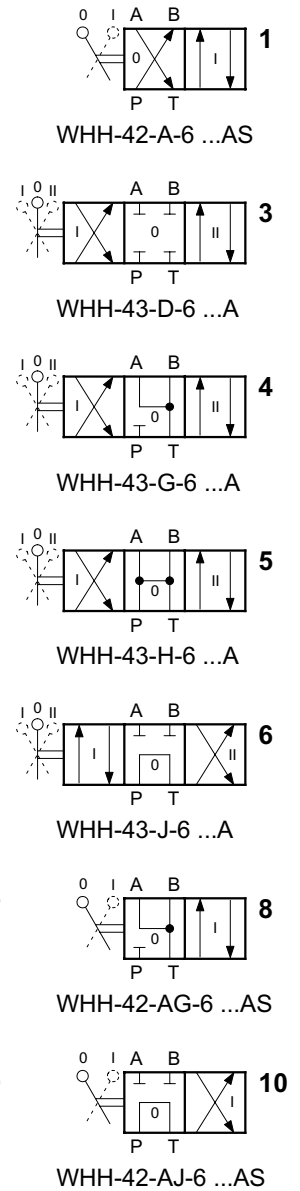
40 l/min, 315 bar

- With ISO 4401 / CETOP RP35H size 3 NFA D03, DIN 24 340 A6 interface
- Spring centred or detented

DIMENSIONS



SYMBOLS



DESCRIPTION

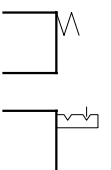
Manifold mounting hand-lever operated spool valve. The lever mechanism enters the valve end-cap through environmental seals, and acts directly

on the spool. Either spring-centring or mechanical detents are available as spool control options.

Spool control:

Style F
Spring centred

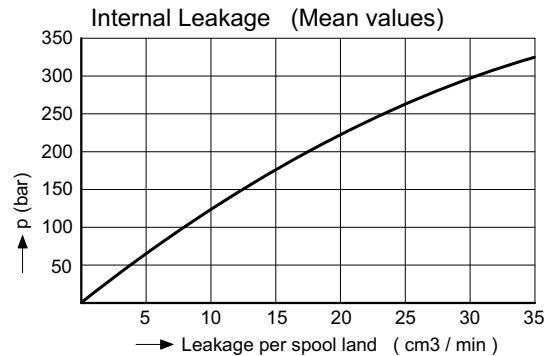
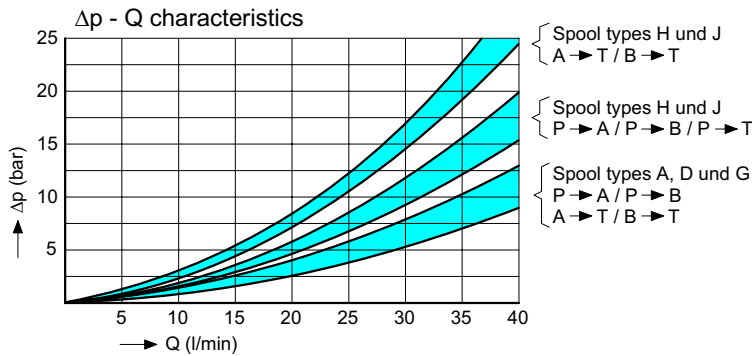
Style R
detented



PRINCIPAL CHARACTERISTICS

Type	4/2 and 4/3 spool valve	Pressure in T	... 210 bar
Design	hand-lever operated	Fluids	hydraulic oils HL and HLP to DIN 51 524 other fluids - contact HTF
Mounting method	manifold mounting	Min. fluid cleanliness	18/14 to ISO 4406 / CETOP RP70H 8 ... 9 to NAS 1638
Size	nominal size 6 mm ISO 4401 size 3 interface	Fluid temperature range	-20° C ... +60° C
Mass	1,5 kg	Viscosity range	10 ... 500 cSt
Mounting attitude	unrestricted	Flow rate Q max.	40 l/min
Flow direction	see symbols		
Operating pressure	... 315 bar in P, A and B		

PERFORMANCE CHARACTERISTICS Oil viscosity 33 cSt



PLEASE NOTE with regard to spring-centred valves:

In applications with non-symmetrical flow paths reduction of flow by some external means may be necessary before the control spring can centre the spool.

MODEL CODE KEY

Ex.

W HH - 42 - AD - 6 - F A S - 1

Directional control valve	_____	W
Hand-lever operated	_____	HH
42 = 4 way, 2 position	} _____	42
43 = 4 way, 3 position		
A, AD, AG, AH, AJ = 4/2 valves (see symbols)	} _____	AD
D, G, H, J = 4/3 valves (see symbols)		
6 = ISO 4401 size 03 interface	_____	6
F = Spring centred	} _____	F
R = Detented		
A = Lever at A end	_____	A
S = Lever arranged for Push and Return	_____	S
Blank = Nitril seals (standard)	} _____	-
V = Viton-seals		
Special seals by arrangement (contact HTF)		
1... 9 = Technical release number (shown on nameplate only)	_____	1