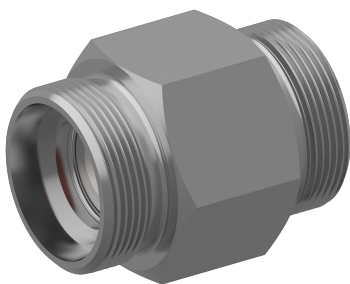


Lock valve

Spring-loaded non-return valve

$Q_{\max} = 110 \text{ l/min}$, $p_{\max} = 10 \text{ bar}$
ball type,
Type series: RV28L-28L-...



- Pipe line mounting valve
- Compact construction
- High pressure rating
- Very small pressure rise
- High opening pressures
- Usable as preload valve

Description

The RV_L series check valve is specially designed for line-mounting installations. It is characterized by high opening pressures and incredibly low pressure rise. This is reflected in the flat performance graph. The valve can be used as a pre-load valve. The spring-loaded spherical poppet-type check valve is very robust, provides excellent sealing, and is highly

resistant to contamination. The valve seat, poppet, and housing are hardened, and the sealing surfaces are precision-machined. In operation, hydraulic flow is blocked in the screw-in direction (port A to port B) and is allowed in the reverse direction. Additional nominal sizes are available on request.

Symbol



Technical data

| General characteristics | Description, value, unit |
|-------------------------|--------------------------------|
| Function group | Lock valve |
| Function | Spring-loaded non-return valve |
| Design | Pipe line mounting valve |

| General characteristics | Description, value, unit |
|-----------------------------|---|
| Characteristic | ball type |
| Construction size | nominal size 25 |
| Thread size | M36×2 |
| Mounting attitude | unrestricted |
| Weight | 0.38 kg |
| Tightening torque steel | 120 Nm |
| Surface protection addition | Screw connection Zn12 thick-film passivated (CrVI-free) |

| Hydraulic characteristics | Description, value, unit |
|---|---|
| Maximum operating pressure | 10 bar |
| Maximum flow rate | 110 l/min |
| Nominal flow rate | 140 l/min |
| Flow direction | see symbol |
| Hydraulic fluid | HL and HLP mineral oil according to DIN 51 524; other fluids on request! |
| Minimum fluid temperature | - 30 °C |
| Maximum fluid temperature | + 80 °C |
| Viscosity range | 10 ... 500 mm ² /s (cSt) |
| Minimum fluid cleanliness (cleanliness class according to ISO 4406:1999) | class 20/18/15 |
| Opening pressure | 0,05 / 4 / 6 / 8 / 10 / 12 bar |



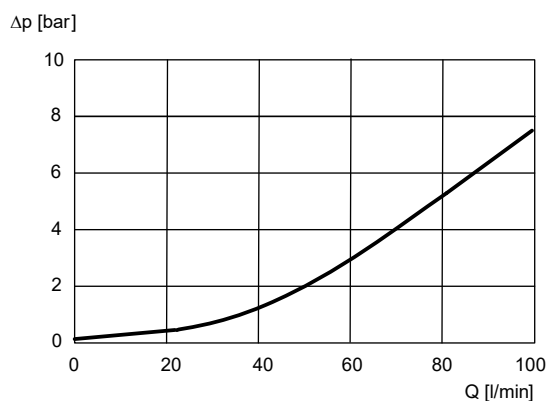
NOTE!

For other values please contact Bucher Hydraulics.

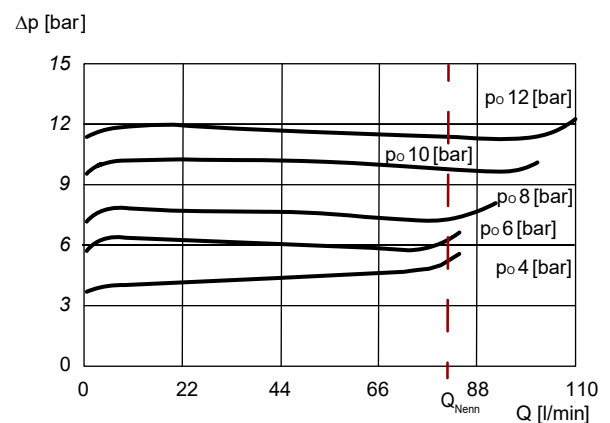
Performance graphs

measured with oil viscosity 33.0 mm²/s (cSt)

$\Delta p = f(Q)$ Pressure drop-flow rate characteristic
Used as suction valve



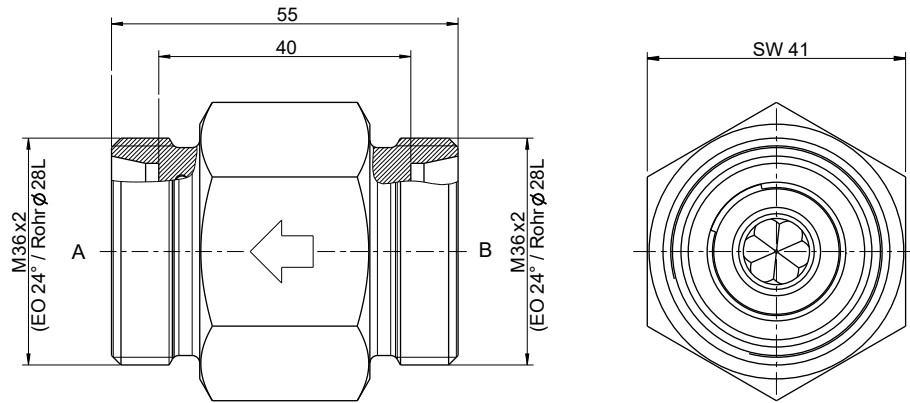
$\Delta p = f(Q)$ Pressure drop-flow rate characteristic
Used as preload valve



Dimensions and sectional view

Beispiel für die Masseinheit:
Example for the dimensional units:

55.0 = 55.0 mm millimeter



Installation information



NOTE!

When fitting the pipe line mounting valve, use the specified tightening torque. The value can be found in the chapter technical data.

Application Notes



NOTE!

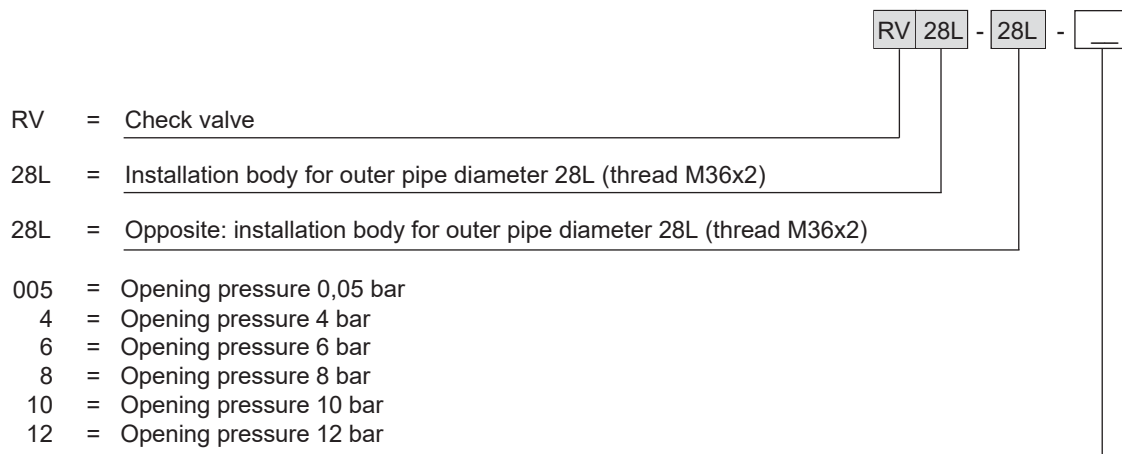
The maximum operating pressure must not be exceeded even when pressure peaks occur. In applications such as accumulator circuits, where sudden pressure can be applied to the valve in the free-flow direction, ensure that the specified flow ratings are not exceeded. Buyers bear the sole responsibility for ensuring that the valve is suitable for their applications and must be substantiated by trials or testing, if necessary.



ATTENTION!

The valves are only suitable for pressure relief in the opening direction to a limited extent. (if necessary, please consult Bucher Hydraulics).

Ordering code

info.de@bucherhydraulics.comwww.bucherhydraulics.com

© 2025 by Bucher Hydraulics Dachau GmbH, 85221 Dachau, Germany

All rights reserved.

Data is provided for the purpose of product description only, and must not be construed as warranted characteristics in the legal sense. The information does not relieve users from the duty of conducting their own evaluations and tests. Because the products are subject to continual improvement, we reserve the right to amend the product specifications contained in this catalogue.