

Line- and Manifold-Mounting Body, Size 10

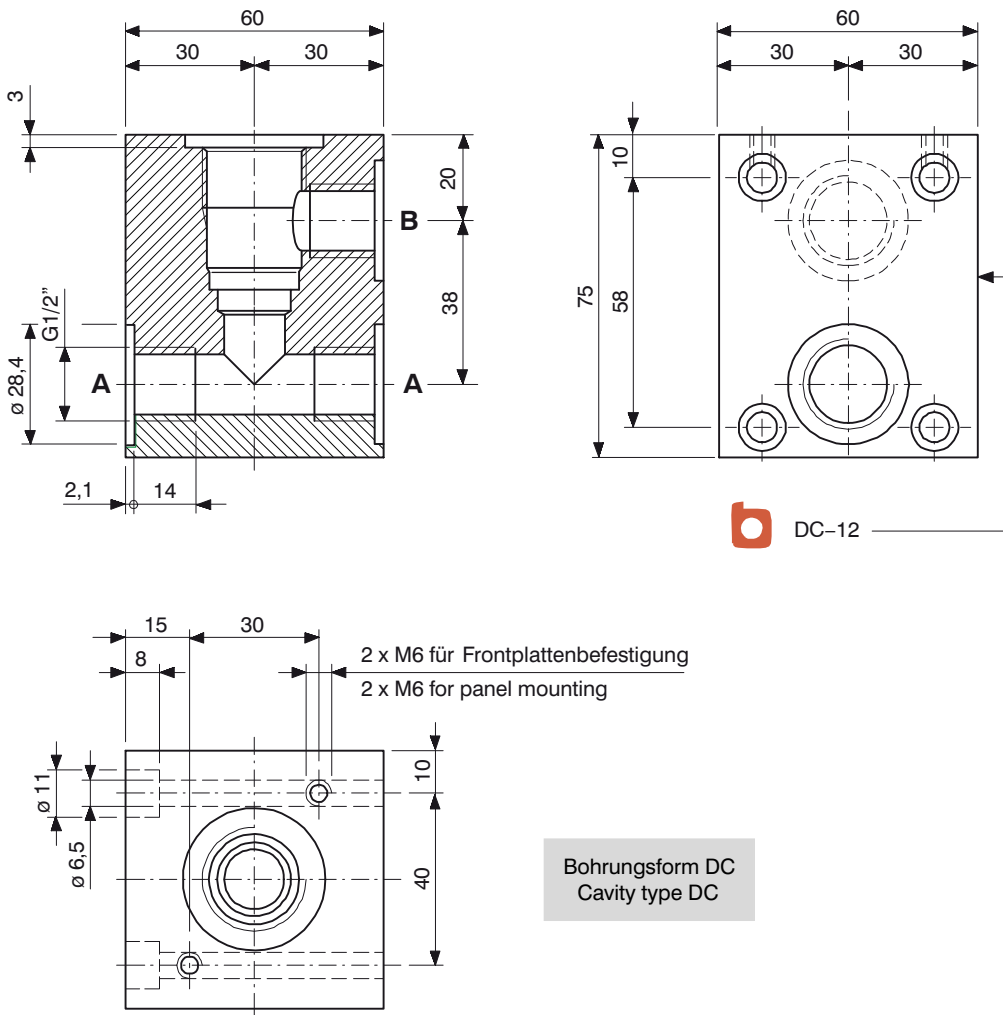
Type DC-12

p_{max} 450 bar (250 bar for manifold mounting)

- Ports A and B: G 1/2"
- Material: steel

- Surface protection:
Zinc plated, chromited (Cr VI-free)
- Weight: 1.65 kg

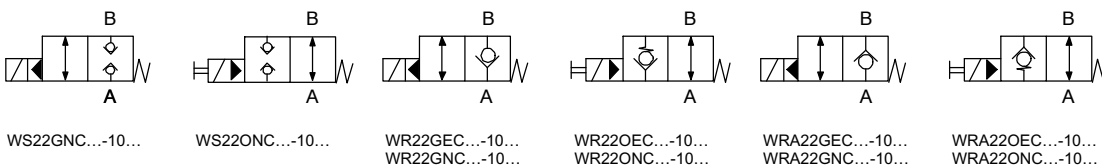
1 Dimensions & sectional view



b DC-12

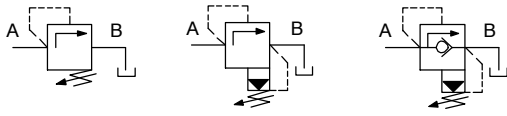
2 Cartridge valves

2/2 directional cartridges (solenoid operated)



Execution with adapter ring C

Pressure regulating cartridges (manually / adjusted)

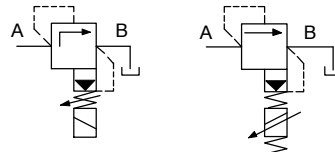


DDPB-1C-10...

DVPA-1-10...

DVPA-RV-1-10...

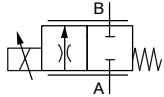
Pressure regulating cartridges (sol. / prop. operated)



WUVP...-1...CO-10...

DBVSA-1CG...-10...

Proportional-throttle cartridge



MDRPA-CG-10...

Execution with adapter ring C

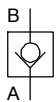
Flow control cartridge



MRP-2C-10...

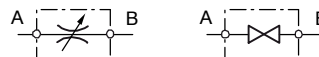
Execution with adapter ring C

Check cartridge



RVPA-10...

Throttle and shut-off cartridge

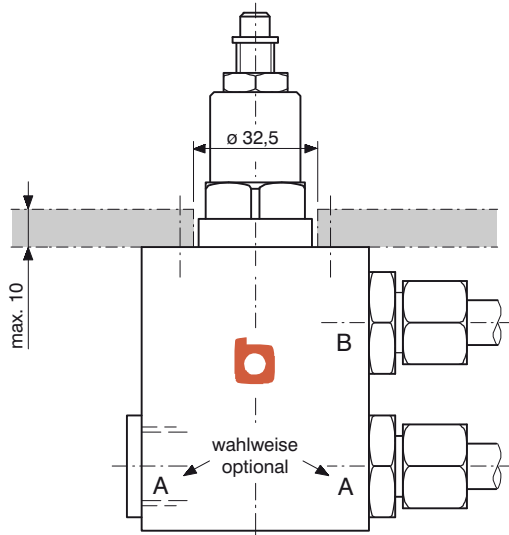


MDPCA-10...

MDPCA-10...

3 Application examples

Line mounting



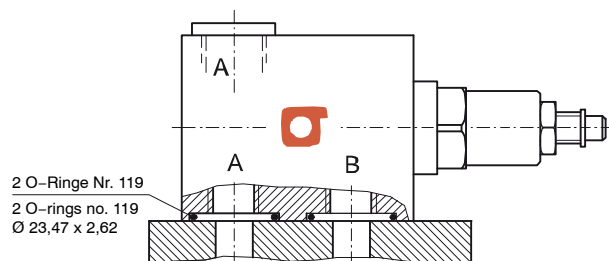
Manifold mounting



ATTENTION!

For manifold mounting the maximum operating pressure is 250 bar. Cylinder cap screws M6/12.9 have to be used. Higher pressures on request.

In the case of manifold-mounting, the customer must plug port A (G1/2") with a threaded plug.



info.ch@bucherhydraulics.com

www.bucherhydraulics.com

© 2015 by Bucher Hydraulics AG Frutigen, CH-3714 Frutigen

All rights reserved.

Data is provided for the purpose of product description only, and must not be construed as warranted characteristics in the legal sense. The information does not relieve users from the duty of conducting their own evaluations and tests. Because the products are subject to continual improvement, we reserve the right to amend the product specifications contained in this catalogue.

Classification: 430.395.-.-. (G-24.20)