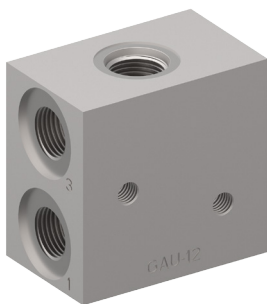


# Valve accessory

## Threaded port body

---

Type series: GAU-12-...

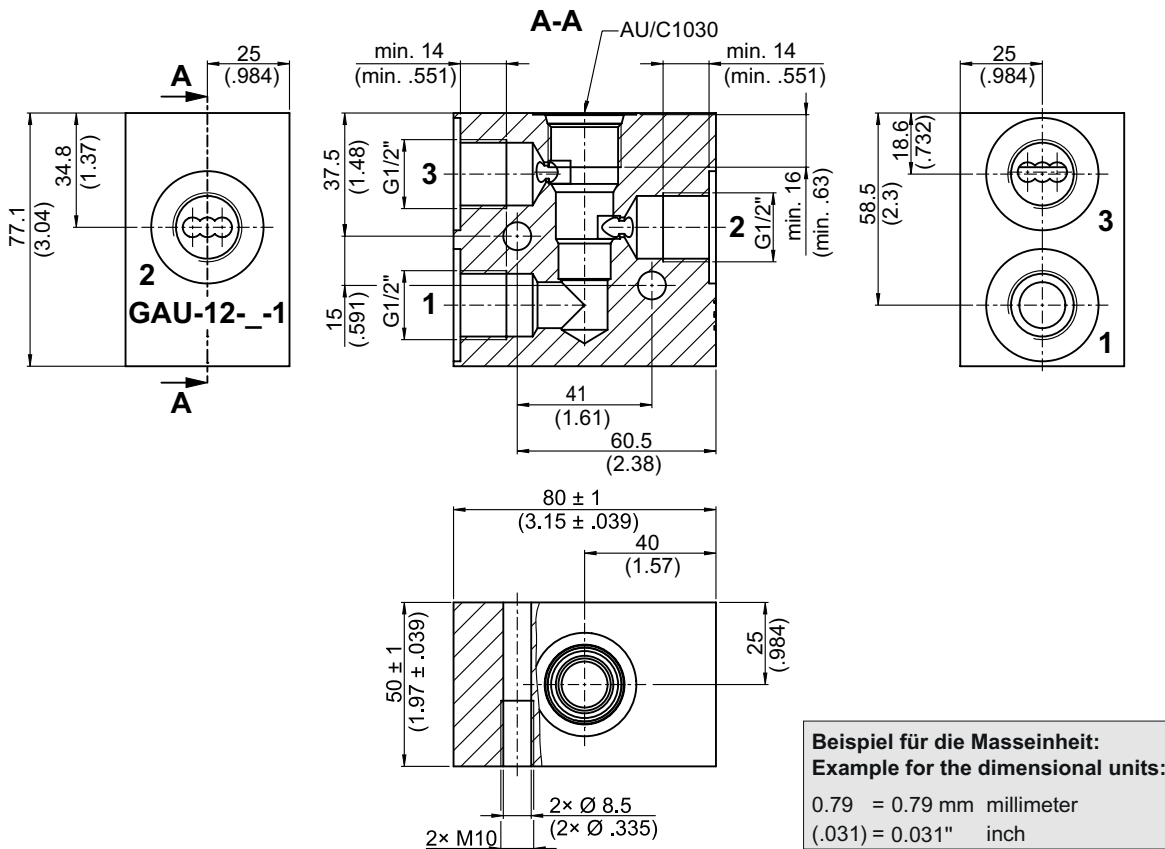


- For cavity AU/C1030
- All external parts with zinc-nickel coating according to DIN EN ISO 19598
- Functionless threaded port body
- Port sizes of the main connections G 1/2"
- Optimized  $\Delta p$  values
- Suitable for piping assembly
- Can be fixed with 2× cap screws

### Technical data

| General Characteristics      | Description, value, unit  |
|------------------------------|---|
| Function group               | Valve accessory   |
| Function                     | Threaded port body  |
| Maximum operating pressure   | 420 bar   |
| Weight                       | 2.0 kg  |
| Cavity acc. factory standard | For cavity AU/C1030   |
| Surface protection           | All external parts with zinc-nickel coating according to DIN EN ISO 19598 |

Dimensions and sectional view



**Beispiel für die Masseinheit:**  
**Example for the dimensional units:**  
 0.79 = 0.79 mm millimeter  
 (.031) = 0.031" inch

Ordering code

Ex. GAU - 12 - S - 1

- GAU = threaded port body for cavity AU/C1030
- 12 = connection size of the main ports G 1/2"
- S = material design steel (*standard*)
- A = material design aluminium with limited performance data (*on request*)
- 1...9 = technical design no. (omit when ordering)