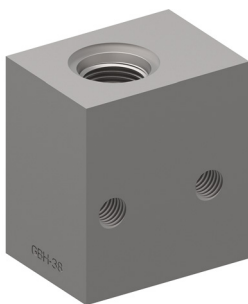


Valve accessory

Threaded port body

Type series: GBH-38...

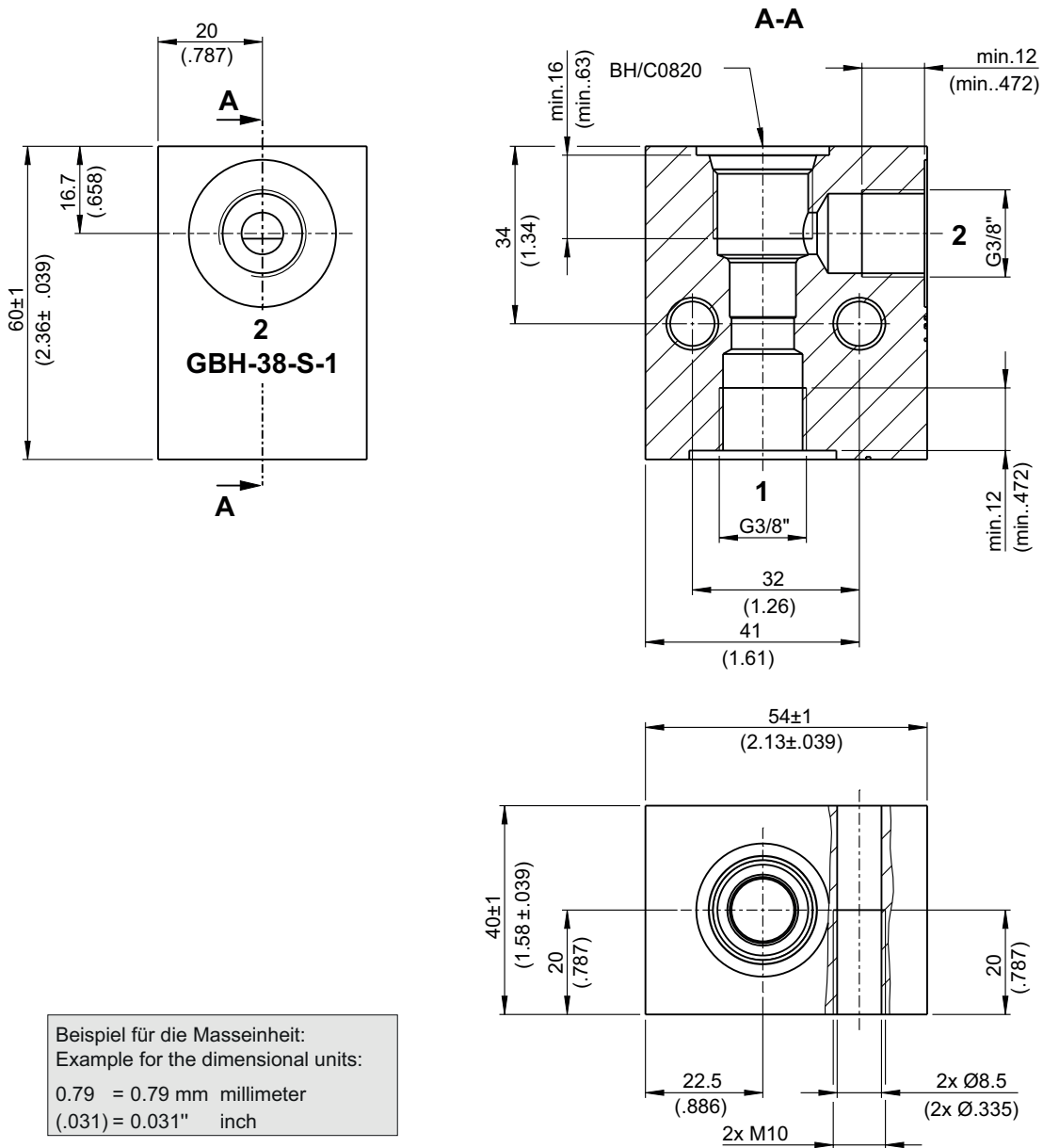


- For cavity BH/C0820
- All external parts with zinc-nickel plating according to DIN EN ISO 19598
- Functionless threaded port body
- Port sizes of the main connections G 3/8"
- Optimized Δp values
- Suitable for piping assembly
- Can be fixed with 2× cap screws

Technical data

| General characteristics | Description, value, unit |
|------------------------------|---|
| Function group | Valve accessory |
| Function | Threaded port body |
| Maximum operating pressure | 420 bar |
| Weight | 0.9 kg |
| Cavity acc. factory standard | For cavity BH/C0820 |
| Surface protection | All external parts with zinc-nickel plating according to DIN EN ISO 19598 |

Dimensions and sectional view



Beispiel für die Masseinheit:
Example for the dimensional units:
0.79 = 0.79 mm millimeter
(.031) = 0.031" inch

Ordering code

Ex. **GBH** - **38** - **S** - **1**

- GBH = threaded port body for cavity BH/C0820
- 38 = connection size of the main ports G 3/8"
- S = material design steel (*standard*)
- A = material design aluminium with limited performance data (*on request*)
- 1...9 = technical design no. (omit when ordering)