

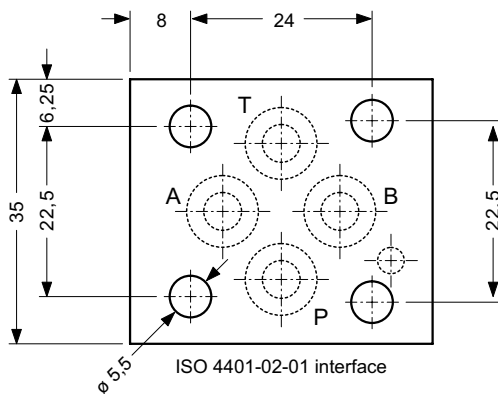
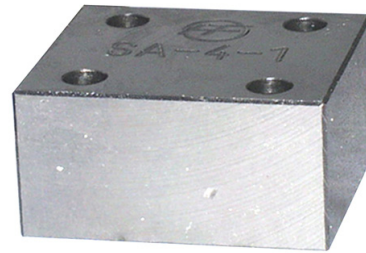
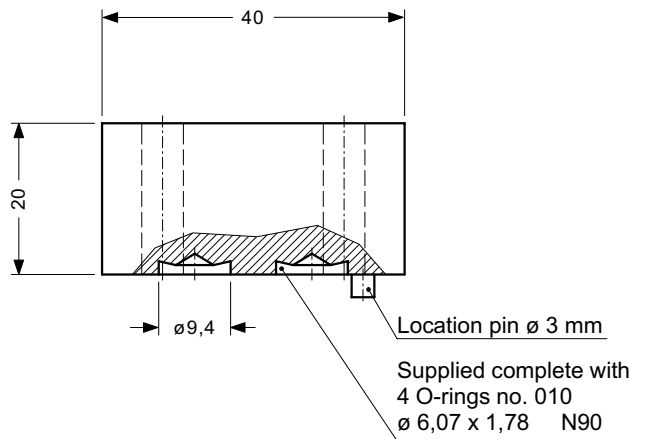
**G-5.10**

**Modular mounting blanking plate, size 2**

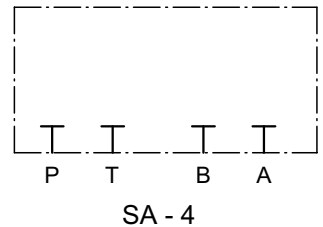
Series SA ...  
250 bar

- ISO 4401-02-01 interface
- Material: steel
- Surface treatment: black finished
- Mass: 0,2 kg

DIMENSIONS



SYMBOL



DESCRIPTION

These blanking- or capping plate are used, for example, to blank-off spare sub-plate stations and can be used as starting point for making special connection plates.

info.ch@bucherhydraulics.com

www.bucherhydraulics.com

© 2015 by Bucher Hydraulics AG Frutigen, CH-3714 Frutigen  
All rights reserved.

Data is provided for the purpose of product description only, and must not be construed as warranted characteristics in the legal sense. The information does not relieve users from the duty of conducting their own evaluations and tests. Because the products are subject to continual improvement, we reserve the right to amend the product specifications contained in this catalogue.