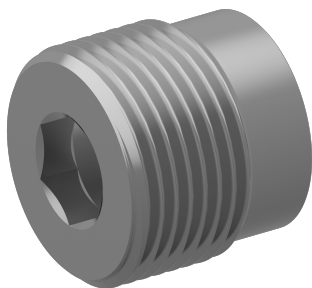


Valve accessory

Threaded mounting sleeve

Type series: ESH-G-16



- Usable for the RKVC check valves
- Compact design

Description

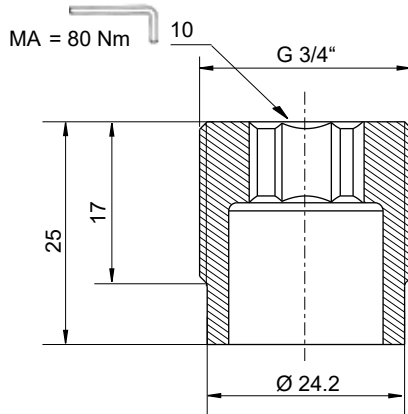
The push-in RKVC cartridge valve can be used in conjunction with an ESH threaded mounting sleeve like a screw-in valve.

Technical data

General characteristics	Description, value, unit
Function group	Valve accessory
Function	Threaded mounting sleeve
Construction size	NG 16
Thread size	G 3/4"
Mounting attitude	unrestricted
Weight	0,047 kg

Dimensions and sectional view

Beispiel für die Masseinheit:
Example for the dimensional units:
25 = 25 mm millimeter



Die angegebenen Maße gelten für den eingebauten Zustand.
The dimensions specified apply to the mounted state.

Installation information



NOTE!

The cavity CEG-04 is used to mount the threading mounting sleeve ESH-G.

Ordering code

	ESH	-	G	-	16
ESH	=		threaded mounting sleeve		
G	=		thread G3/4"		
16	=		nominal size 16		

Related data sheets

Reference	Description
170-P-080124	Cavity CEG-04-16

info.de@bucherhydraulics.com

www.bucherhydraulics.com

© 2025 by Bucher Hydraulics Dachau GmbH, 85221 Dachau, Germany

All rights reserved.

Data is provided for the purpose of product description only, and must not be construed as warranted characteristics in the legal sense. The information does not relieve users from the duty of conducting their own evaluations and tests. Because the products are subject to continual improvement, we reserve the right to amend the product specifications contained in this catalogue.